



Sony Ericsson

Working Instructions

- mechanical -



T707
TM717



CONTENTS

1	Exterior Views.....	4
1.1	T707a	4
2	Tools	5
3	Disassembly.....	6
3.1	Lower Unit	6
3.1.1	Battery Cover and Battery	6
3.1.2	Screw Cover	7
3.1.3	Lower Outer Cover	8
3.1.4	Main&BT Antenna Box with Speaker	9
3.1.5	Core Unit Label	10
3.1.6	Main PCBA	11
3.2	Upper Unit	12
3.2.1	Main Window Assy	12
3.2.2	Upper Outer Cover	13
3.2.3	Upper FPC Assy & Sub PCBA	14
3.2.4	Hinge Clip.....	18
3.2.5	Lower Inner Cover	18
3.2.6	Hinge FPC & Upper Inner Cover.....	19
4	Replacement	21
4.1	Battery Cover	21
4.2	Screw Cover Left	21
4.3	Screw Cover Right.....	21
4.4	Lower Outer Cover	21
4.5	Main&BT Antenna Box with Speaker.....	22
4.6	Core Unit Label	22
4.7	Main Window Assy	22
4.8	Upper Outer Cover.....	22
4.9	Sub PCBA (for T707a)	23
4.10	Sub PCBA without Sub Camera (for T707&TM717).....	23
4.11	ESD fabric for camera	23
4.12	Upper FPC Assy (for T707&TM707a)	23
4.13	Upper FPC Assy with GPS (for TM717)	24
4.14	Vibrator Grommet.....	24
4.15	Hinge Clip	24
4.16	Lower Inner Cover	24
4.17	Upper Inner Cover	25
4.18	Hinge FPC.....	25
4.19	Liquid Intrusion Indicator	26
4.20	Keypad.....	28
4.21	Volume Key	30
4.22	Gasket SIM Connector	31
4.23	SIM FPC PCBA.....	32



4.24	Vera Shielding Can Lid.....	34
4.25	Keyboard FPC Assy	36
4.26	Net Fabric Receiver	40
4.27	Gasket QCIF Camera (for T707a).....	41
4.28	Sub Camera (for T707a)	42
4.29	Sub LCD	43
4.30	GPS PCBA Dummy Bracket (for T707&T707a)	46
4.31	Gasket Conductive Sheet (for TM717)	48
4.32	GPS PCBA (for TM717).....	50
4.33	ESD Fabric for GPS (for TM717).....	52
4.34	Light Guide.....	53
4.35	Camera Module 3.2 Mpixel.....	55
4.36	Main LCD	57
4.37	Waterproof Tape	59
4.38	Hinge.....	60
4.39	Gasket LCD Connector for no sub camera (for T707&TM717)	61
5	Reassembly.....	63
5.1	Upper Unit	63
5.1.1	Upper Inner Cover & Hinge FPC.....	63
5.1.2	Lower Inner Cover	63
5.1.3	Hinge Clip.....	64
5.1.4	Upper FPC Assy & Sub PCBA	64
5.1.5	Upper Outer Cover	69
5.1.6	Main Window Assy	70
5.2	Lower Unit	71
5.2.1	Main PCBA	71
5.2.2	Main&BT Antenna Box with Speaker	72
5.2.3	Lower Outer Cover	73
5.2.4	Screw Cover.....	74
5.2.5	Core Unit Label	75
5.2.6	Battery & Battery Cover	75
6	Revision History	77

**For general information about mechanical repair related issues, refer to
1220-1333: Generic Repair Manual - mechanical**



1 Exterior Views

1.1 T707a



2 Tools

SPECIAL TOOLS

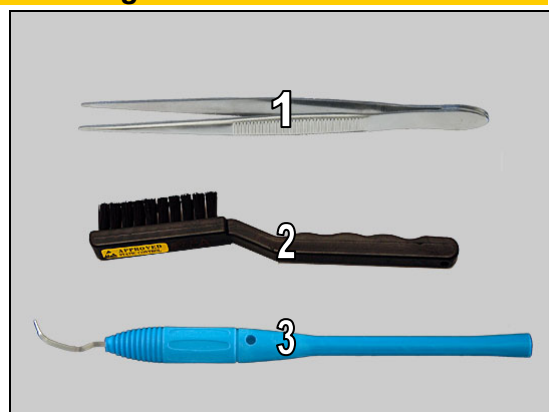
1. Torque Screwdriver
2. Bits (T5)
3. Bits (T6)
4. Bits (JCIS No. 0)
5. Front Opening Tool
6. Guitar Pick
7. Flex Film Assembly Tool



For part information on the tools above, refer to the 'Tools Catalogue' and/or the 'Tools Matrix'!

STANDARD TOOLS

1. ESD tweezers
2. ESD brush
3. Dentist hook

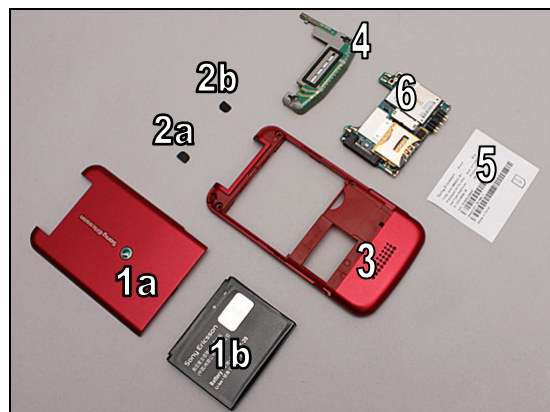


3 Disassembly

3.1 Lower Unit

The disassembly is done in the following order:

1. Battery Cover (a) & battery (b)
2. Screw Cover Left (a) & Screw Cover Right (b)
3. Lower Outer Cover
4. Main&BT Antenna Box with Speaker
5. Core Unit Label
6. Main PCBA



3.1.1 Battery Cover and Battery

Unsnap the Battery Cover by using the Front Opening Tool as shown in the picture.



Remove the Battery Cover.



Insert the Front Opening Tool and release the Battery as shown in the picture.





Disassembly: Lower Unit

Raise and remove the Battery.



Remove these three Screws using the Torx bit No.5.



3.1.2 Screw Cover

Open the phone.

Remove the Screw Cover Left by using the Front Opening Tool.



Do the same with the Screw Cover Right.





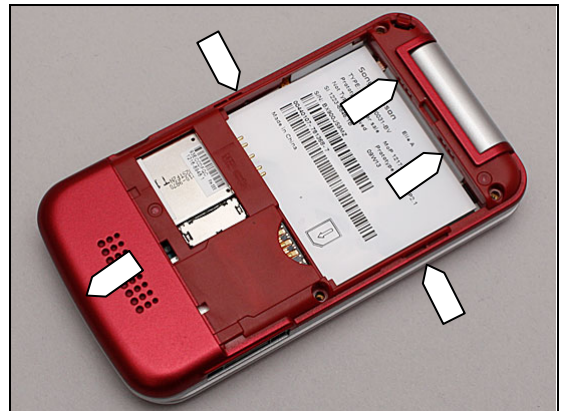
Disassembly: Lower Unit

Remove the two Screws by using Torx bit No.6.



3.1.3 Lower Outer Cover

There are five hooks around as shown in the picture.



Insert the Guitar Pick and slide it forth and back to unsnap this side of Lower Outer Cover.

Don't slide this PCBA area above connector!



Do the same on the opposite side.



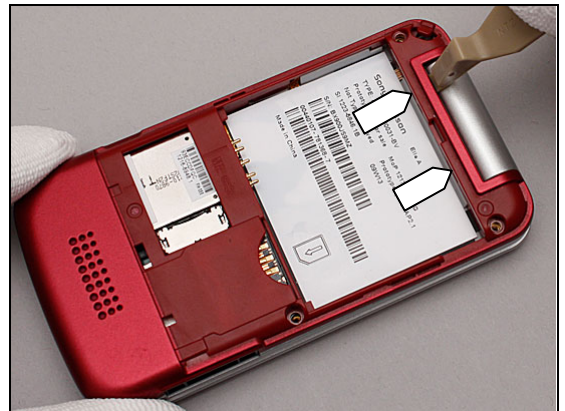


Disassembly: Lower Unit

Do the same on the top side.



Unsnap the two hooks by using the Front Opening Tool.

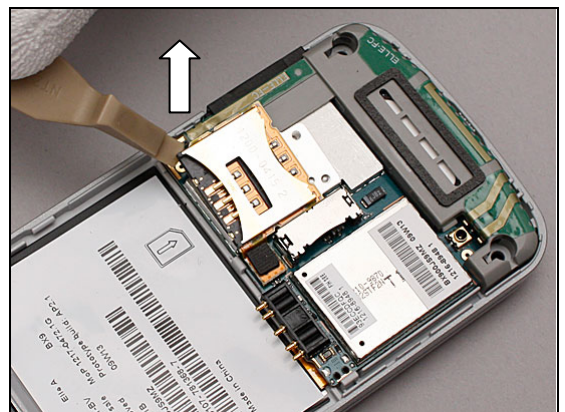


Remove the Lower Outer Cover.



3.1.4 Main&BT Antenna Box with Speaker

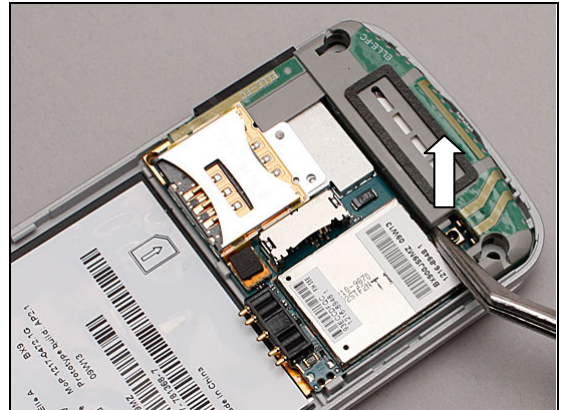
Loosen the SIM FPC PCBA by using the Front Opening Tool.



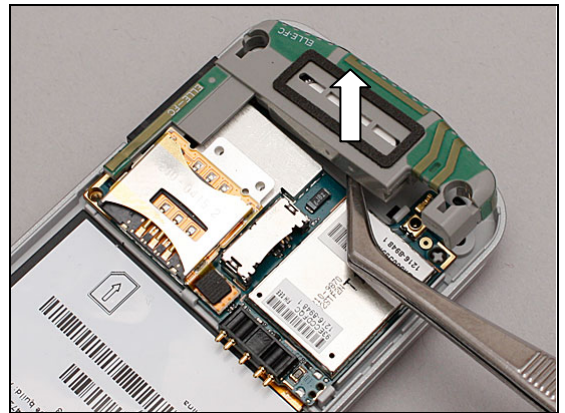


Disassembly: Lower Unit

Insert the tweezers under the corner of the Main&BT Antenna Box with Speaker as shown in the picture.



Lift up the Main&BT Antenna Box with Speaker.



Remove it.



3.1.5 Core Unit Label

Read the old Core Unit Label and/or write the information into the 'LabelMake' program before removal.

Carefully peel off the Label by using the tweezers.

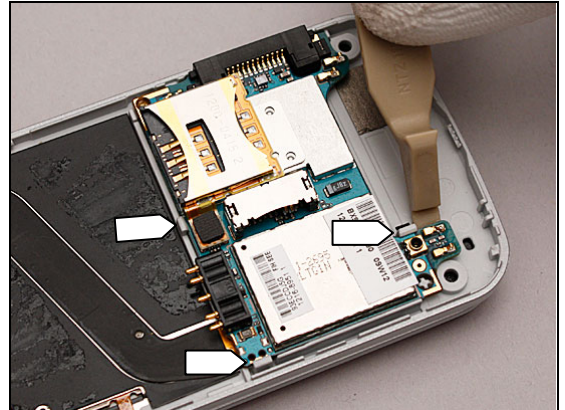




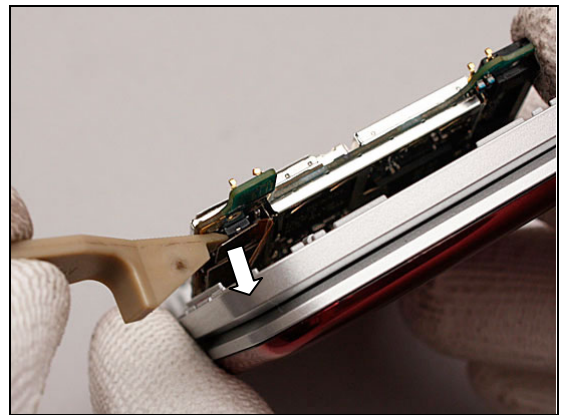
Disassembly: Lower Unit

3.1.6 Main PCBA

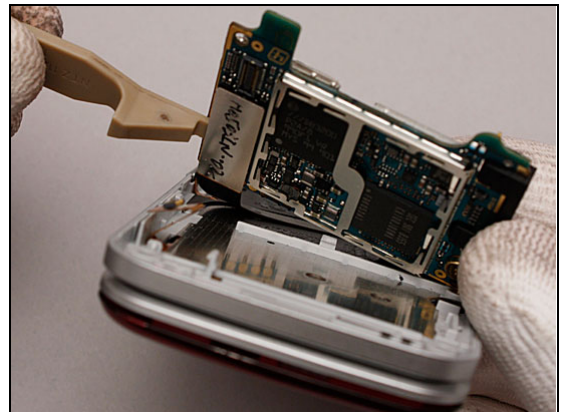
Unsnap the three hooks to release the Main PCBA by using the Front Opening Tool.



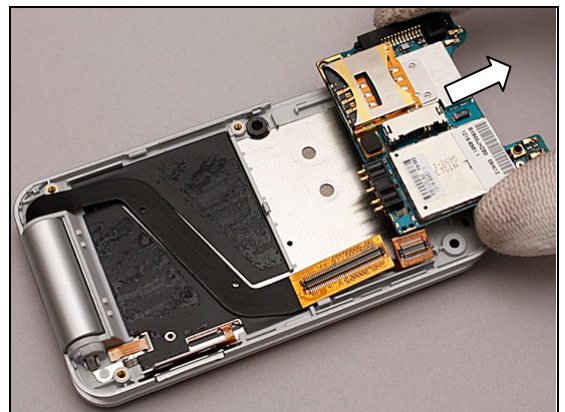
Raise the bottom of the Main PCBA as shown in the picture and disconnect the Keyboard FPC Assy connector by using the Front Opening Tool.



Disconnect the Hinge FPC connector by using the Front Opening Tool.



Remove the Main PCBA.





Disassembly

3.2 Upper Unit

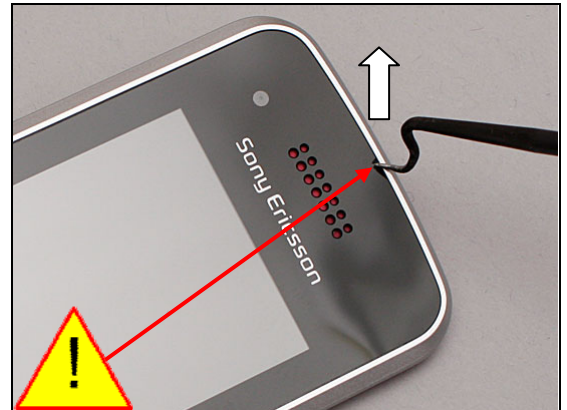
The disassembly is done in the following order:

1. Main Window Assy
2. Upper Outer Cover
3. Upper FPC Assy (a) & Sub PCBA (b)
4. Hinge Clip
5. Lower Inner Cover
6. Hinge FPC (a) & Upper Inner Cover (b)

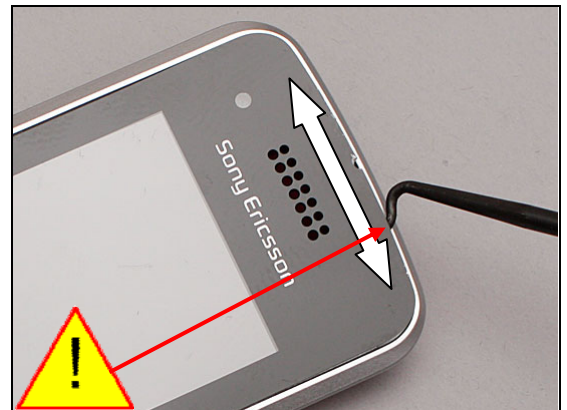


3.2.1 Main Window Assy

Carefully insert the dentist hook from the hole to loosen the Main Window Assy.



Slide the dentist hook back and forth to release the Main Window Assy.



Peel off it by using the tweezers.

Scrap! Not to be reused!





Disassembly: Upper Unit

3.2.2 Upper Outer Cover

Remove these four screws by using JCIS No.0 bit.

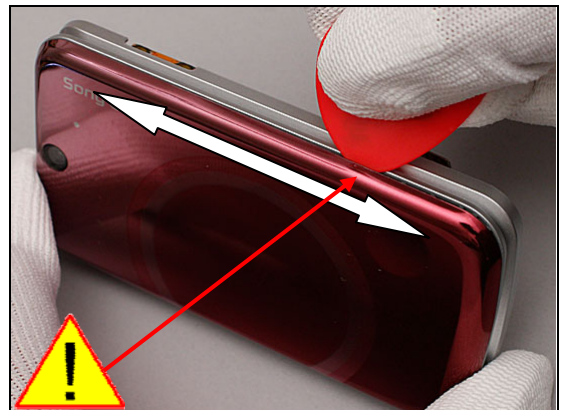


There are seven hooks around the Upper Outer Cover.

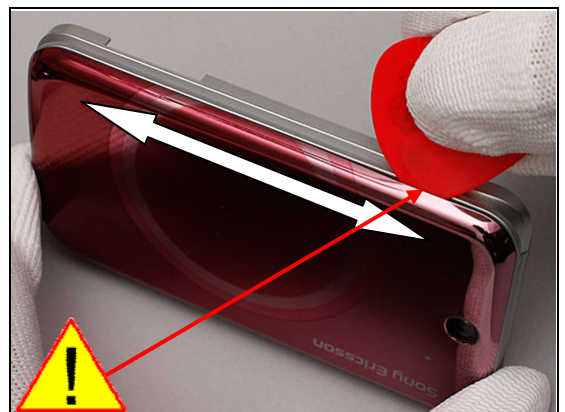


Insert the Guitar Pick and slide it along this side to unsnap the snap hooks as shown in the picture.

If necessary, slide back and forth until all hooks are unlatched!



Do the same on the opposite side.



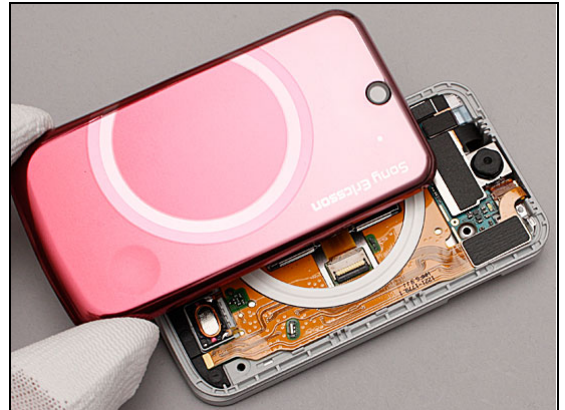


Disassembly: Upper Unit

Continue to slide it on the bottom side.

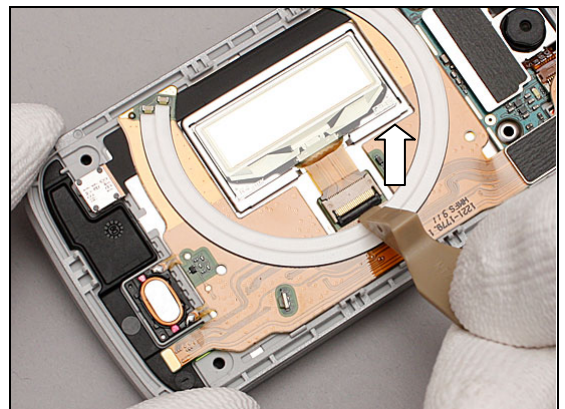


Remove the Upper Outer Cover.

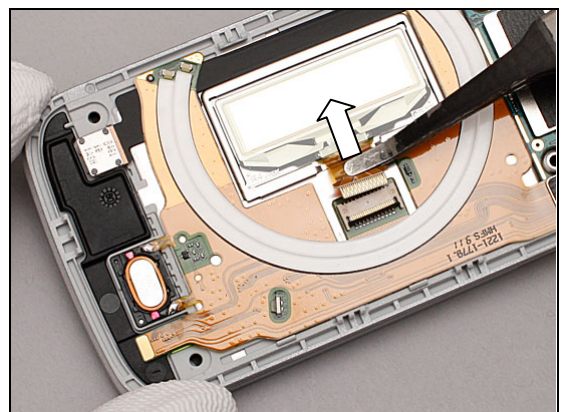


3.2.3 Upper FPC Assy & Sub PCBA

Unlock the locking bar of Sub LCD connector by using the Front Opening Tool.



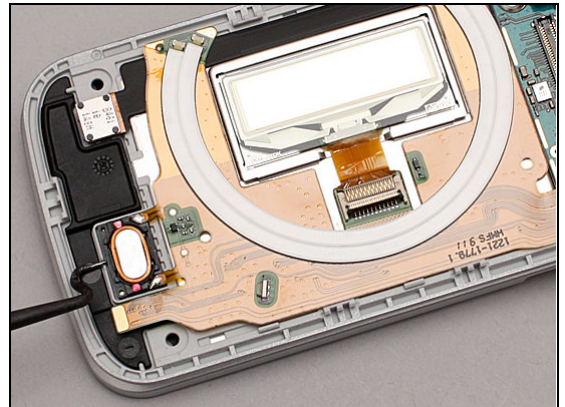
Disconnect the Sub LCD connector and Upper FPC Assy by using the Flex Film Assembly Tool.





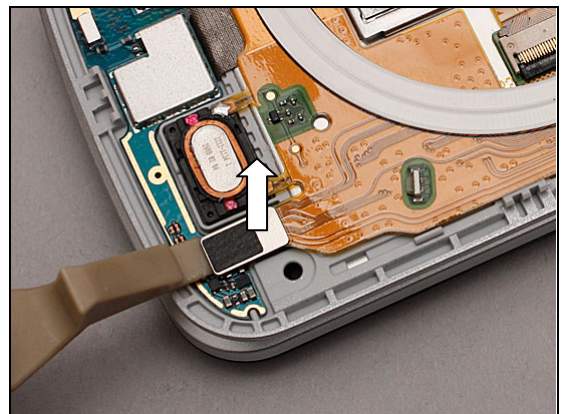
Disassembly: Upper Unit

Release the receiver from its cavity by using the dentist hook.

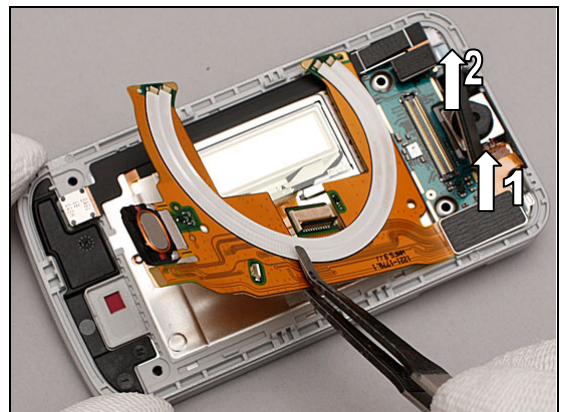


Only for TM717 (with GPS)

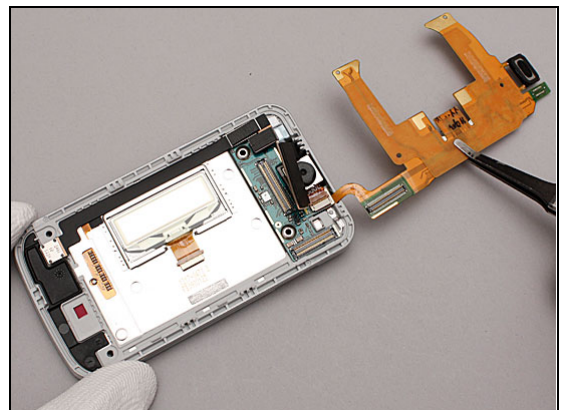
Disconnect the GPS PCBA connector.



Carefully peel off the Upper FPC Assy partly and disconnect the Upper FPC Assy connector (1) & the Hinge FPC connector (2).



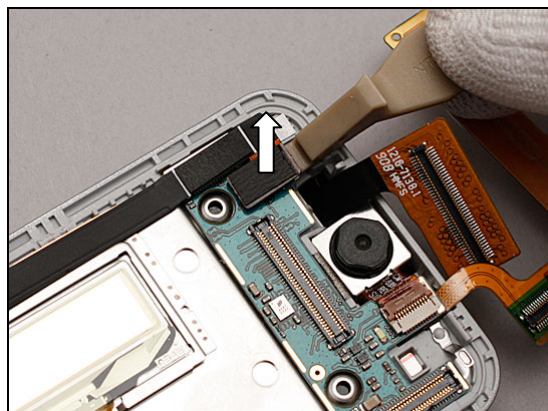
Turn over the Upper FPC Assy as shown in the picture.



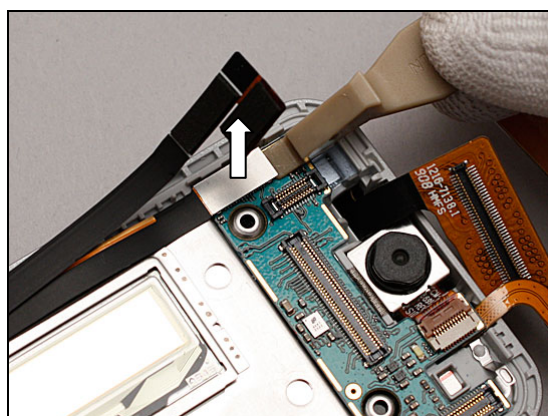
Disassembly: Upper Unit

Only for T707a (with Sub Camera)

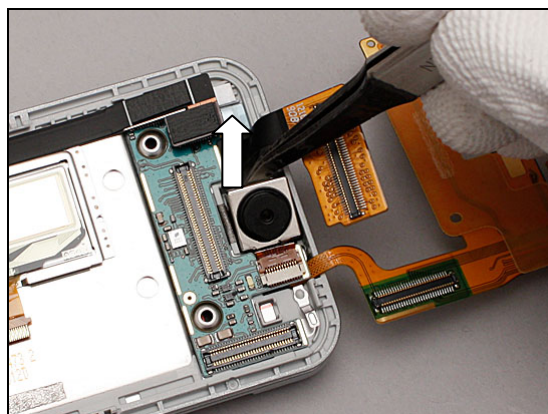
Disconnect the Sub Camera connector



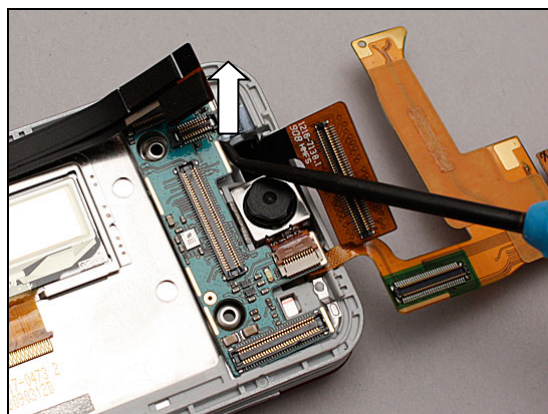
Disconnect the Main LCD connector



Lift the Camera out of its cavity with the Flex Film Assembly Tool.

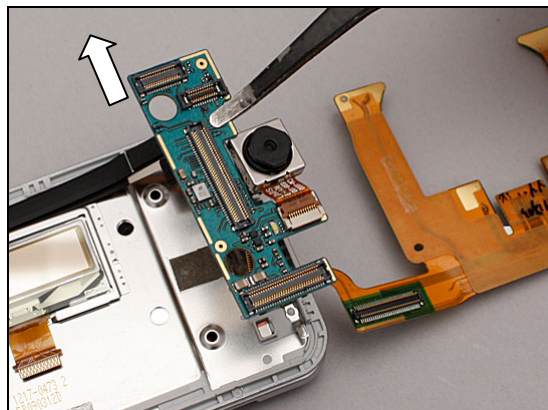


Carefully loosen the Sub PCBA by using the dentist hook.

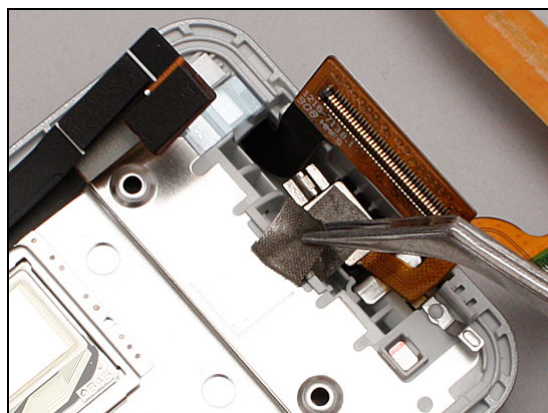


Disassembly: Upper Unit

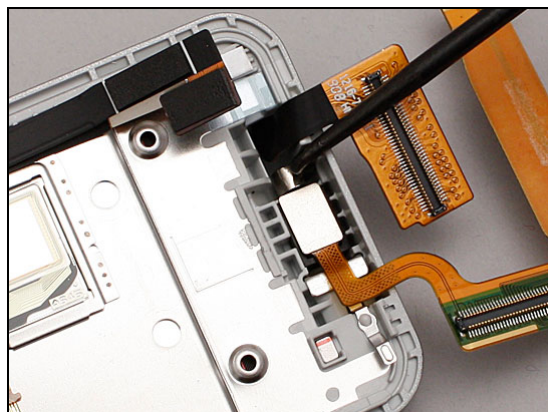
Remove the Sub PCBA with the Camera.



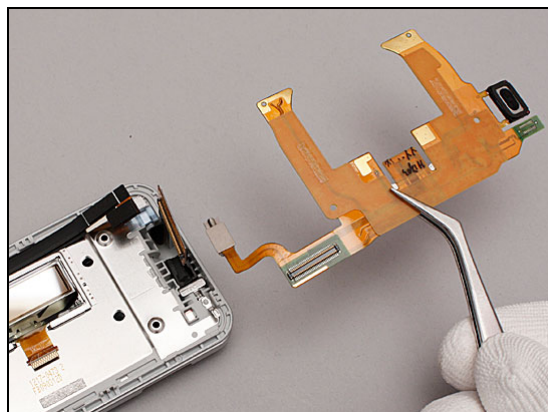
Peel off the ESD fabric for camera with the tweezers.



Lift the vibrator out of its cavity by using the dentist hook



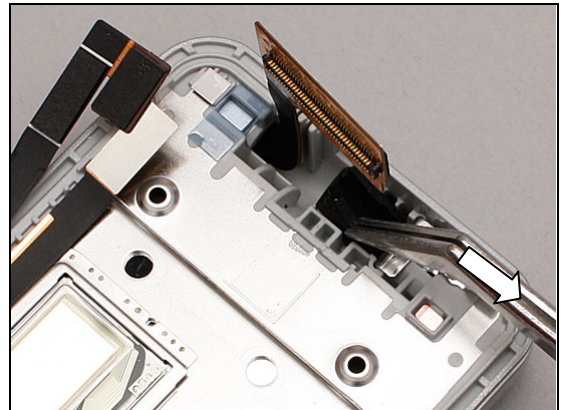
Remove the Upper FPC Assy.





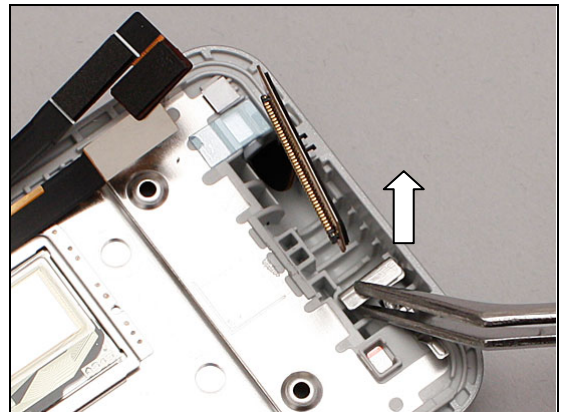
Disassembly: Upper Unit

Remove the Vibrator Grommet .



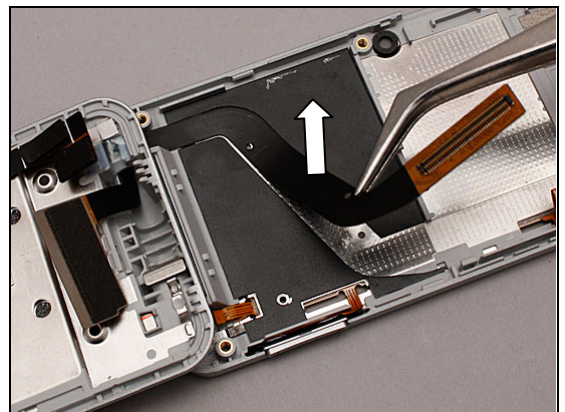
3.2.4 Hinge Clip

Lift out the Hinge Clip from its cavity using the tweezers.



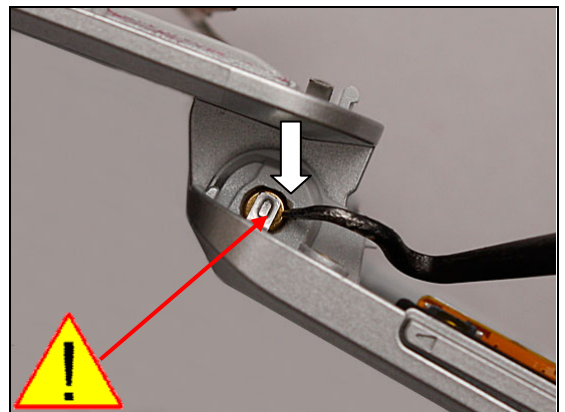
3.2.5 Lower Inner Cover

Open the phone and peel off the Hinge FPC from the Lower Inner Cover.



Press the Hinge inwards by using the dentist hook.

Be careful not to damage the grounding spring!



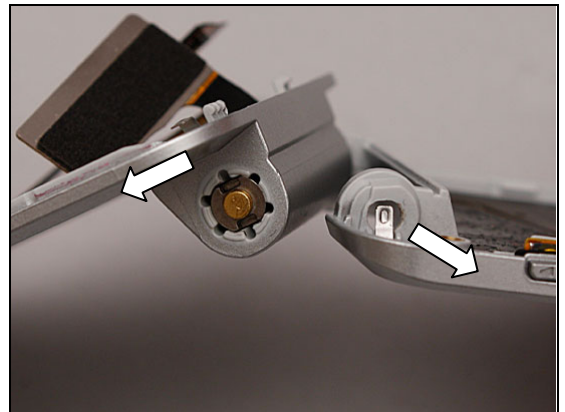


Disassembly: Upper Unit

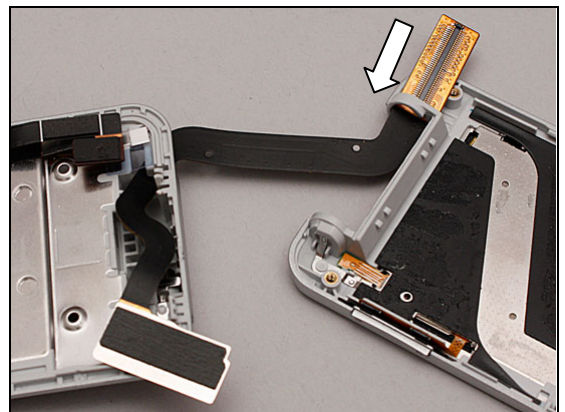
The hinge is out of its cavity as shown in picture.



Move the Upper Inner Cover and Lower Inner Cover in the direction of the arrows until two parts are separated.



Slide the Hinge FPC out of the hole of the Lower Inner Cover.



3.2.6 Hinge FPC & Upper Inner Cover

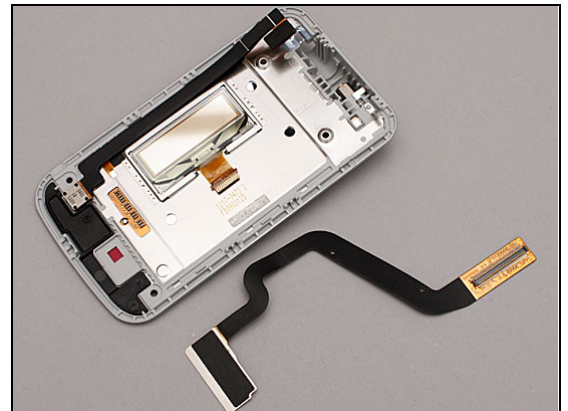
Slide the Hinge FPC out of the hole of the Upper Inner Cover.





Disassembly: Upper Unit

Separate them.





4 Replacement

4.1 Battery Cover

Follow the 3.1.1 Disassembly instructions!

Prepare the new Battery Cover.

Follow the 5.2.6 Reassembly instructions!



4.2 Screw Cover Left

Follow the 3.1.1 – 3.1.2 Disassembly instructions!

Prepare the new Screw Cover.

Follow the 5.2.4 – 5.2.6 Reassembly instructions!

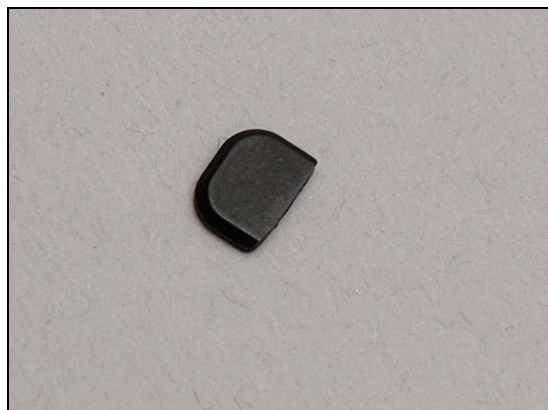


4.3 Screw Cover Right

Follow the 3.1.1 – 3.1.2 Disassembly instructions!

Prepare the new Screw Cover.

Follow the 5.2.4 – 5.2.6 Reassembly instructions!



4.4 Lower Outer Cover

Follow the 3.1.1 – 3.1.3 Disassembly instructions!

Follow the 4.19 Removal instructions!

Prepare the new Lower Outer Cover.

Follow the 4.19 Installation instructions!

Follow the 5.2.4 – 5.2.6 Reassembly instructions!



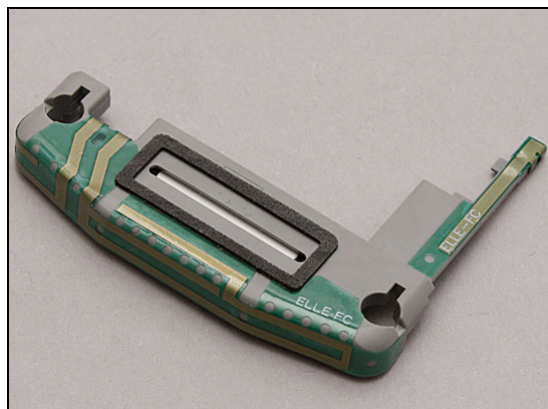
Replacement

4.5 Main&BT Antenna Box with Speaker

Follow the 3.1.1 – 3.1.4 Disassembly instructions!

Prepare the new Main&BT Antenna Box with Speaker.

Follow the 5.2.2 – 5.2.6 Reassembly instructions!

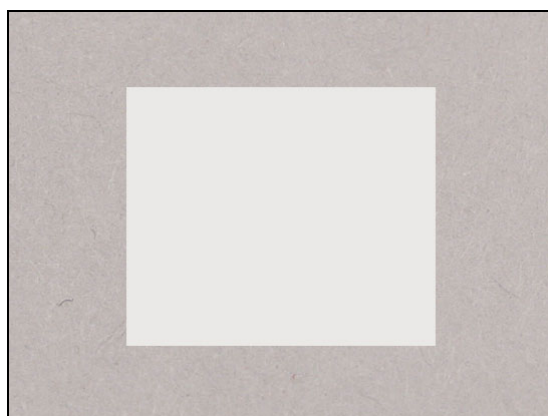


4.6 Core Unit Label

Follow the 3.1.1 & 3.1.5 Disassembly instructions!

Prepare the new Core Unit Label.

Follow the 5.2.5 & 5.2.6 Reassembly instructions!



4.7 Main Window Assy

Follow the 3.1.1 & 3.2.1 Disassembly instructions!

Prepare the new Main Window Assy.

Follow the 5.1.6 & 5.2.6 Reassembly instructions!



4.8 Upper Outer Cover

Follow the 3.1.1 & 3.2.1 – 3.2.2 Disassembly instructions!

Prepare the new Upper Outer Cover.

Follow the 5.1.5 – 5.1.6 & 5.2.6 Reassembly instructions!





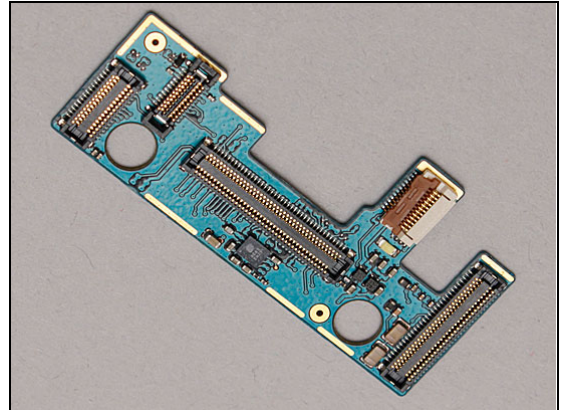
Replacement

4.9 Sub PCBA (for T707a)

Follow the 3.1.1 & 3.2.1 – 3.2.4 Disassembly instructions!

Prepare the new Sub PCBA.

Follow the 5.1.4 – 5.1.6 & 5.2.6 Reassembly instructions!

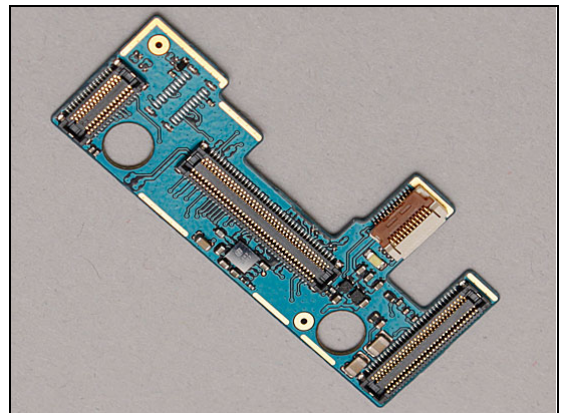


4.10 Sub PCBA without Sub Camera (for T707&TM717)

Follow the 3.1.1 & 3.2.1 – 3.2.3 Disassembly instructions!

Prepare the new Sub PCBA without Sub Camera.

Follow the 5.1.4 – 5.1.6 & 5.2.6 Reassembly instructions!

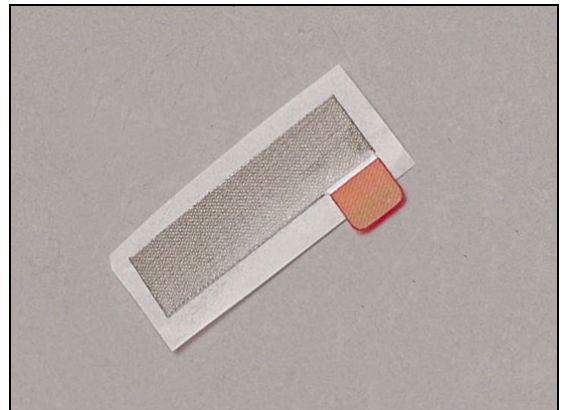


4.11 ESD fabric for camera

Follow the 3.1.1 & 3.2.1 – 3.2.3 Disassembly instructions!

Prepare the new ESD fabric for camera.

Follow the 5.1.4 – 5.1.6 & 5.2.6 Reassembly instructions!



4.12 Upper FPC Assy (for T707&TM707a)

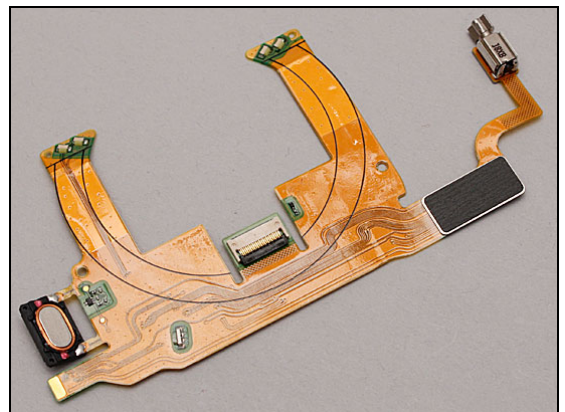
Follow the 3.1.1 & 3.2.1 – 3.2.3 Disassembly instructions!

Follow the 4.34 Removal instructions!

Prepare the new Upper FPC Assy.

Follow the 4.34 Installation instructions!

Follow the 5.1.4 – 5.1.6 & 5.2.6 Reassembly instructions!



Replacement

4.13 Upper FPC Assy with GPS (for TM717)

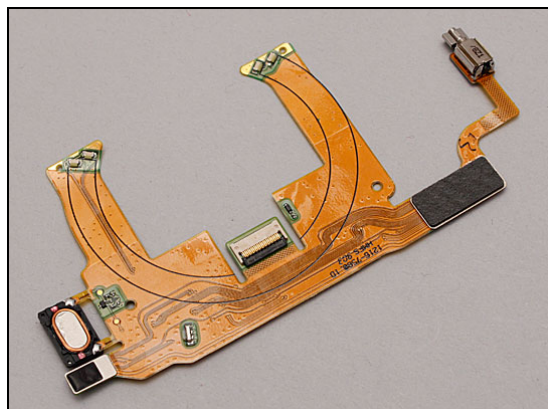
Follow the 3.1.1 & 3.2.1 – 3.2.3 Disassembly instructions!

Follow the 4.34 Removal instructions!

Prepare the new Upper FPC Assy with GPS.

Follow the 4.34 Installation instructions!

Follow the 5.1.4 – 5.1.6 & 5.2.6 Reassembly instructions!



4.14 Vibrator Grommet

Follow the 3.1.1 & 3.2.1 – 3.2.3 Disassembly instructions!

Prepare the new Vibrator Grommet.

Follow the 5.1.4 – 5.1.6 & 5.2.6 Reassembly instructions!



4.15 Hinge Clip

Follow the 3.1.1 & 3.2.1 – 3.2.4 Disassembly instructions!

Prepare the new Hinge Clip.

Follow the 5.1.3 – 5.1.6 & 5.2.6 Reassembly instructions!



4.16 Lower Inner Cover

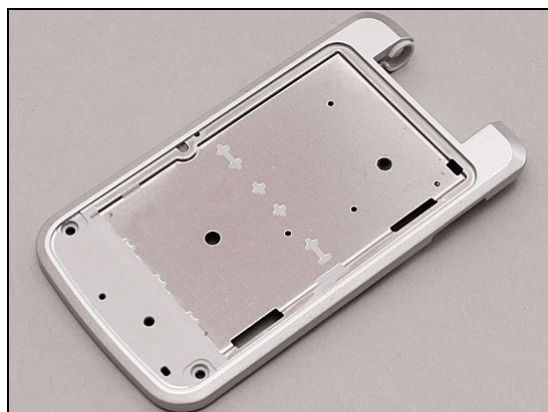
Follow the 3.1.1 – 3.2.5 Disassembly instructions!

Follow the 4.20, 4.21 & 4.25 Removal instructions!

Prepare the new Lower Inner Cover.

Follow the 4.25, 4.20 & 4.21 Installation instructions!

Follow the 5.1.2 – 5.2.6 Reassembly instructions!





Replacement

4.17 Upper Inner Cover

Follow the 3.1.1 – 3.2.6 Disassembly instructions!

Follow the 4.19, 4.36 – 4.38, 4.27 – 4.30

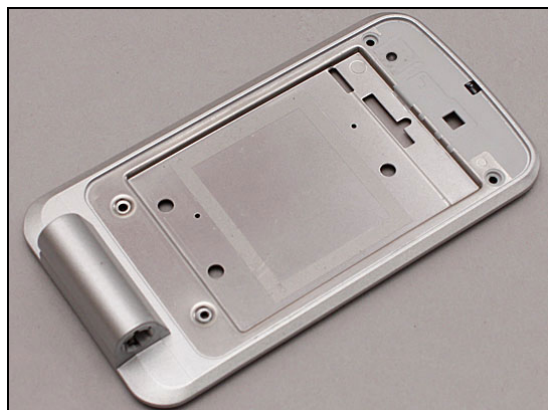
or 4.31 – 4.33 Removal instructions!

Prepare the new Upper Inner Cover.

Follow the 4.19, 4.36 – 4.38, 4.27 – 4.30

or 4.31– 4.33 Installation instructions!

Follow the 5.1.1 – 5.2.6 Reassembly instructions!



4.18 Hinge FPC

Follow the 3.1.1 – 3.2.6 Disassembly instructions!

Prepare the new Hinge FPC.

Follow the 5.1.1 – 5.2.6 Reassembly instructions!



Replacement

4.19 Liquid Intrusion Indicator

INSPECTION

Follow the 3.1.1 Disassembly instructions!

To check whether the Liquid Intrusion Indicator has been activated (reddish color).

If activated:

Carry out the replacement as described below.

Follow the 5.2.6 Reassembly instructions!

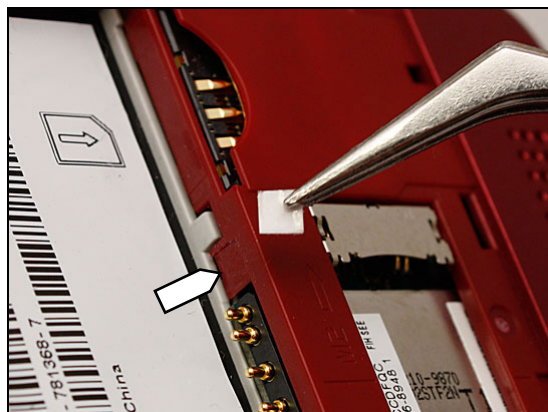
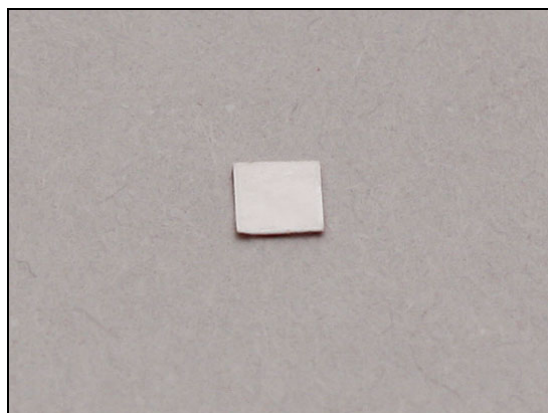
REMOVAL

Remove the activated Liquid Intrusion Indicator with the dentist hook and the tweezers.

INSTALLATION

Attach the new Liquid Intrusion Indicator in place.

Press to secure its attachment.



Replacement: Liquid Intrusion Indicator

INSPECTION

Follow the 3.1.1 & 3.2.1 – 3.2.2 Disassembly instructions!

To check whether the Liquid Intrusion Indicator has been activated (reddish color).

If activated:

Carry out the replacement as described below.

Follow the 5.1.5 – 5.1.6 & 5.2.6 Reassembly instructions!

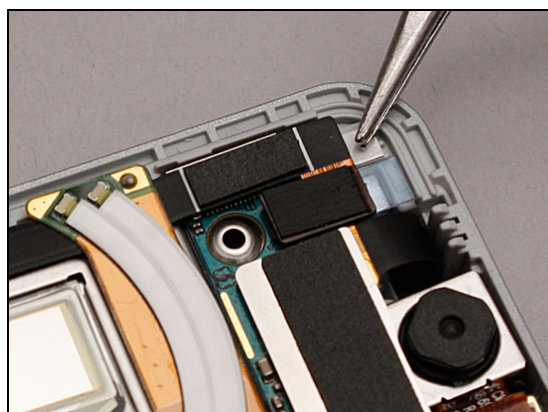
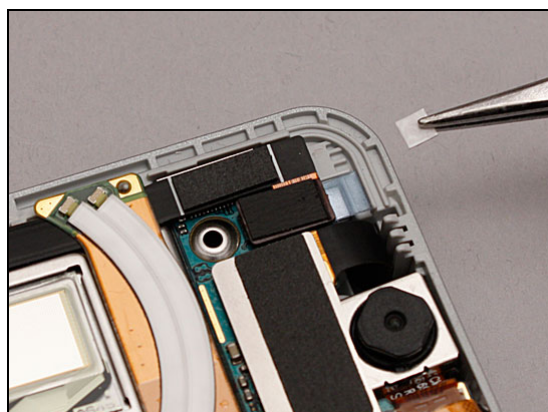
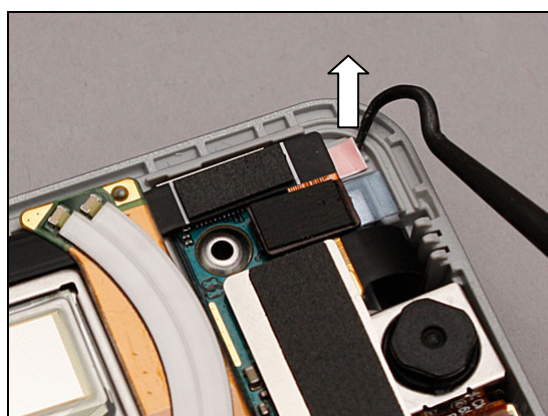
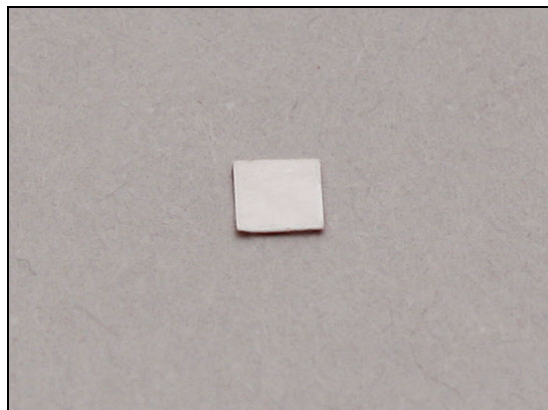
REMOVAL

Remove the activated Liquid Intrusion Indicator with the dentist hook and the tweezers.

INSTALLATION

Attach the new Liquid Intrusion Indicator in place.

Press to secure its attachment.



Replacement

4.20 Keypad

Follow 3.1.1 – 3.1.2 Disassembly instructions!

Carry out the replacement as described below.

Follow 5.2.4 & 5.2.6 Reassembly instructions!

REMOVAL

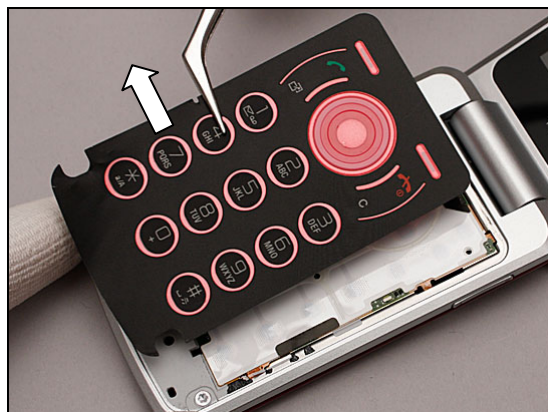
Carefully insert the dentist hook from screw cover side and slide it forth and back to release the Keypad.

Peel off the Keypad.

Scrap! Not to be reused!

INSTALLATION

Place the new Keypad in position.





Replacement: Keypad

Press around to secure the attachment.



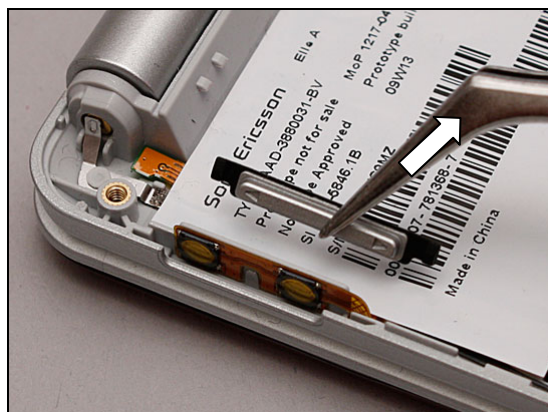
Replacement

4.21 Volume Key

Follow the 3.1.1 – 3.1.3 Disassembly instructions!
Carry out the replacement as described below.
Follow the 5.2.3 – 5.2.6 Reassembly instructions!

REMOVAL

Remove the Volume Key with the tweezers.



INSTALLATION

Place a new Volume Key in position.



Press to secure its position.



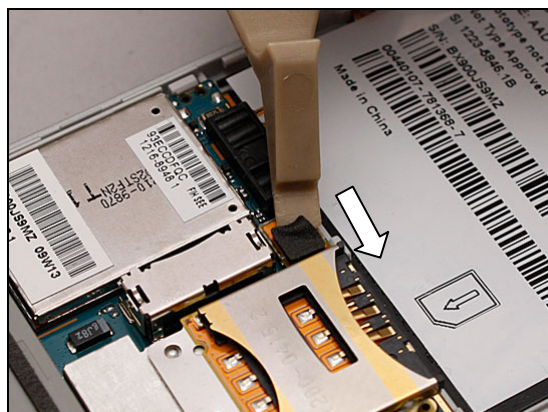
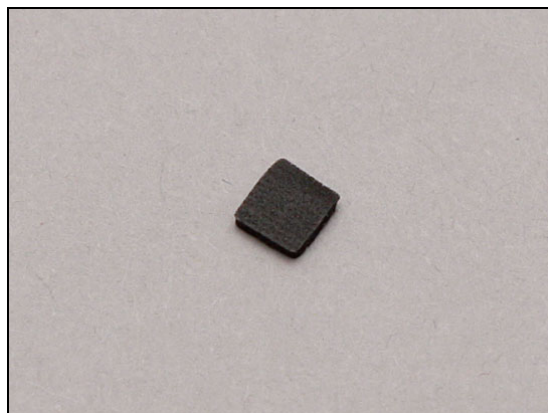
Replacement

4.22 Gasket SIM Connector

Follow the 3.1.1 – 3.1.3 Disassembly instructions!
 Carry out the replacement as described below.
 Follow the 5.2.3 – 5.2.6 Reassembly instructions!

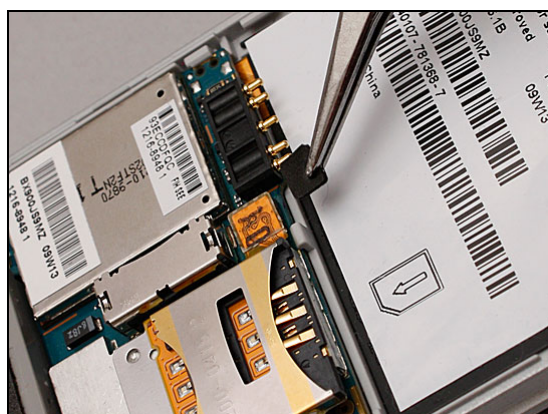
REMOVAL

Peel off the Gasket SIM connector by using the Front Opening Tool.

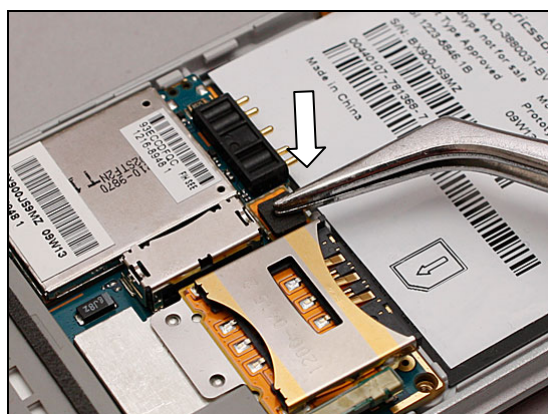


INSTALLATION

Attach the new Gasket SIM connector in place.



Press to secure its attachment.





Replacement

4.23 SIM FPC PCBA

Follow the 3.1.1 – 3.1.3 Disassembly instructions!

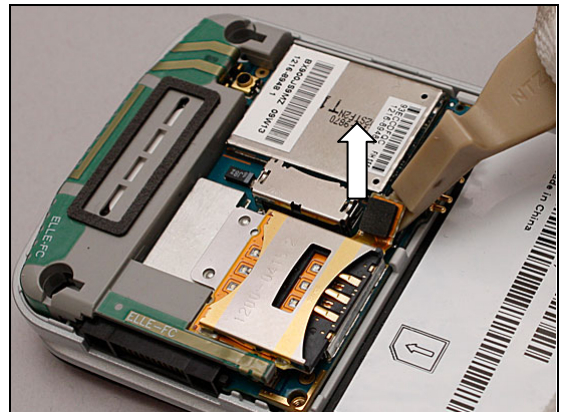
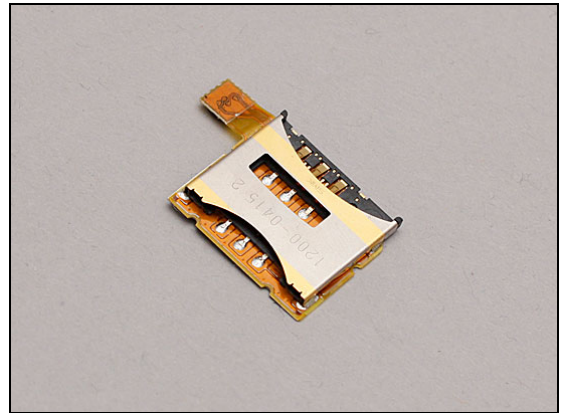
Carry out the replacement as described below.

Follow the 4.22 Installation instructions!

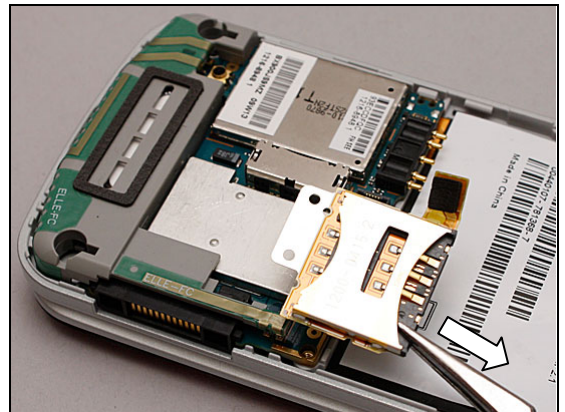
Follow the 5.2.3 – 5.2.6 Reassembly instructions!

REMOVAL

Disconnect the SIM FPC PCBA connector by using the Front Opening Tool.

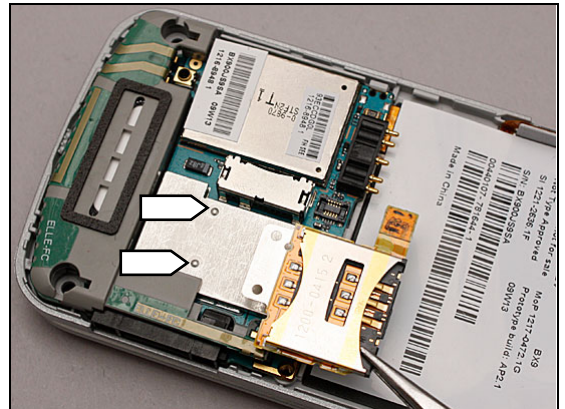


Loosen the SIM FPC PCBA and remove it with the tweezers.



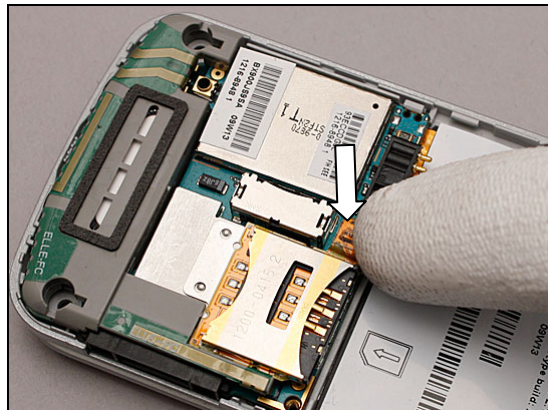
INSTALLATION

Install a new SIM FPC PCBA in place aligning by the two guide spots.

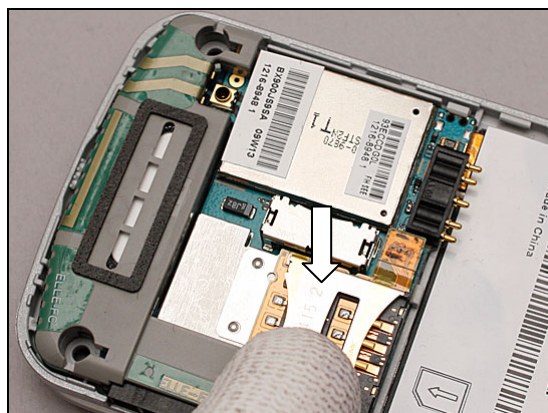


Replacement: SIM FPC PCBA

Connect the SIM FPC PCBA connector.



Press to secure the attachment.



Replacement

4.24 Vera Shielding Can Lid

Follow the 3.1.1 – 3.1.4 Disassembly instructions!

Follow the 4.23 Removal instructions!

Carry out the replacement as described below.

Follow the 4.23 & 4.22 Installation instructions!

Follow the 5.2.2 – 5.2.6 Reassembly instructions!

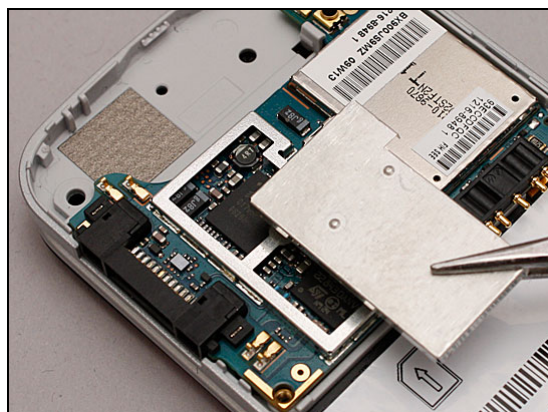
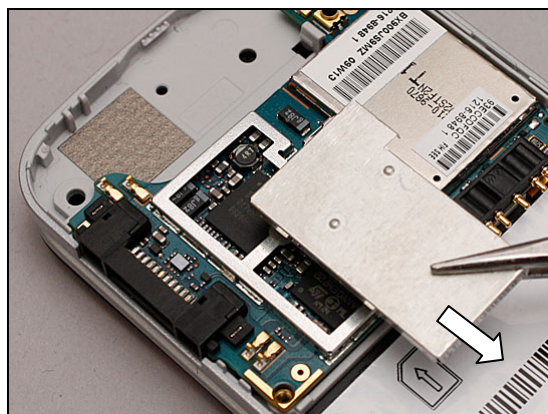
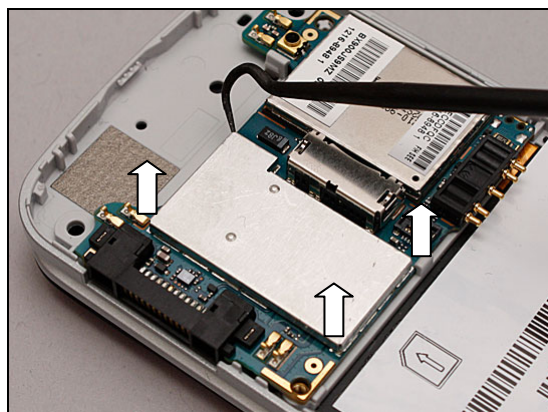
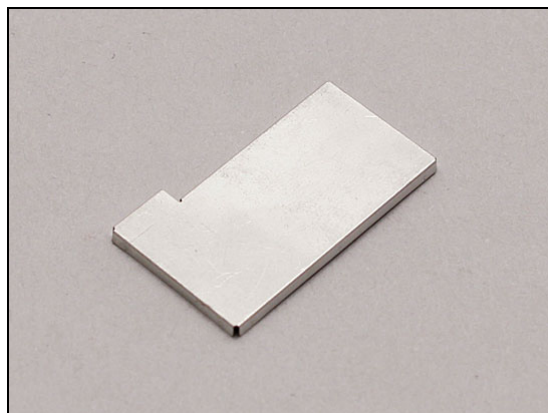
REMOVAL

Loosen each corner of the Vera Shielding Can Lid by using the dentist hook.

Remove it

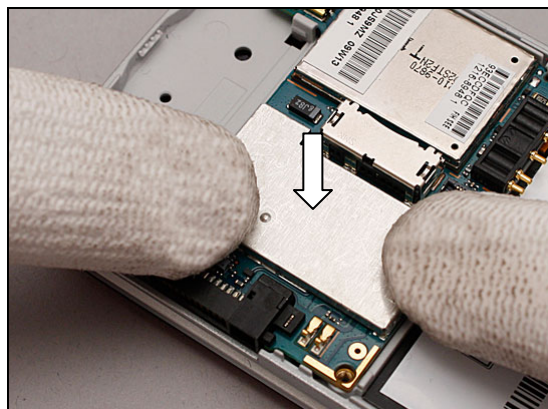
INSTALLATION

Install a new Vera Shielding Can Lid in place.



Replacement: Vera Shielding Can Lid

Press to snap it.



Replacement

4.25 Keyboard FPC Assy

Follow the 3.1.1 – 3.1.6 Disassembly instructions!

Follow the 4.20 & 4.21 Removal instructions!

Carry out the replacement as described below.

Follow the 4.20 & 4.21 Installation instructions!

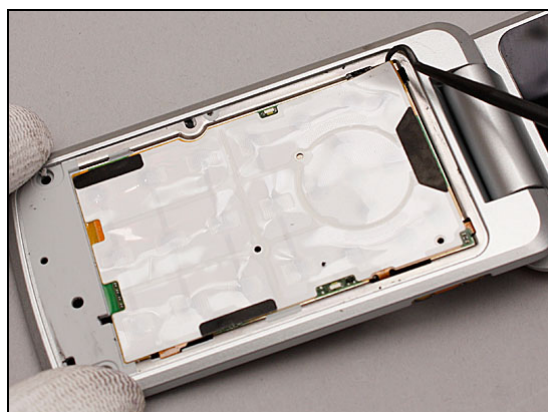
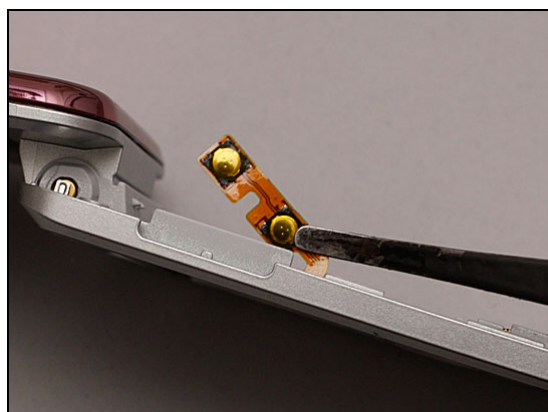
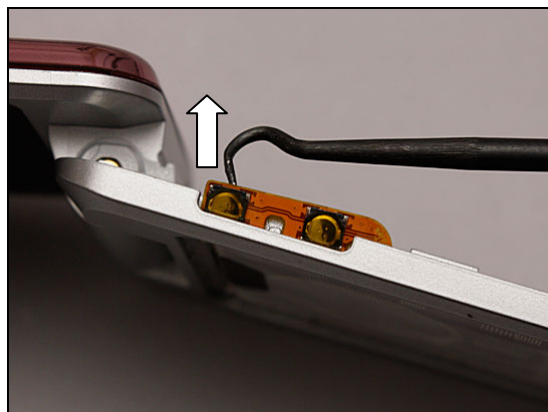
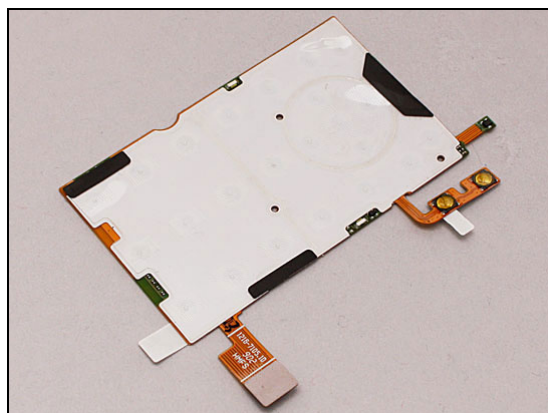
Follow the 5.2.1 – 5.2.6 Reassembly instructions!

REMOVAL

Loosen the volume key dome by using the dentist hook.

Carefully take it out of the slot using the Flex Film Assembly Tool.

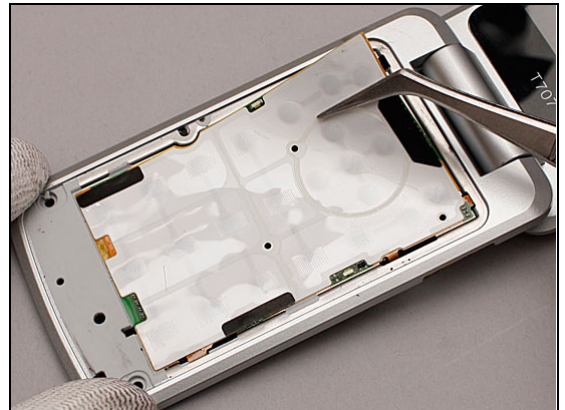
Carefully insert the dentist hook through this slot to release the Keyboard FPC Assy from this corner.



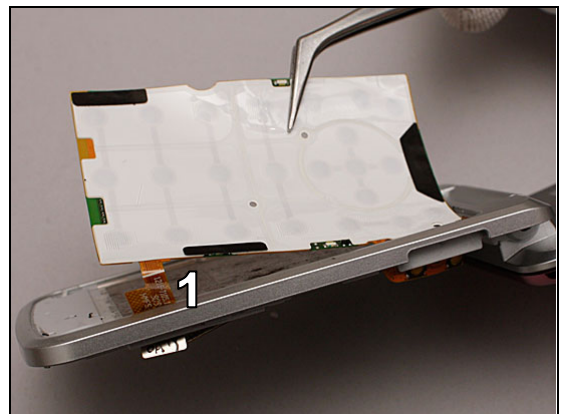


Replacement: Keyboard FPC Assy

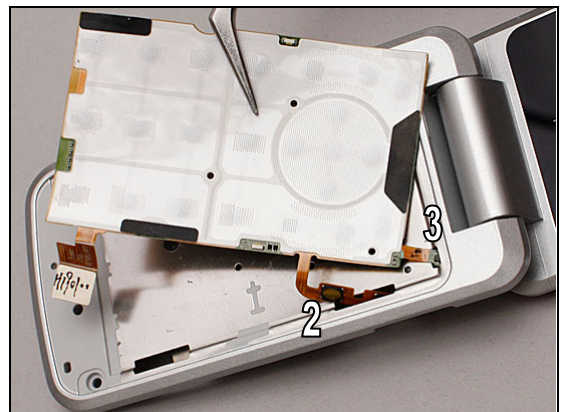
Gently peel off the Keyboard FPC Assy with the tweezers.



Slide the keyboard connector (1) out of the Lower Inner Cover.

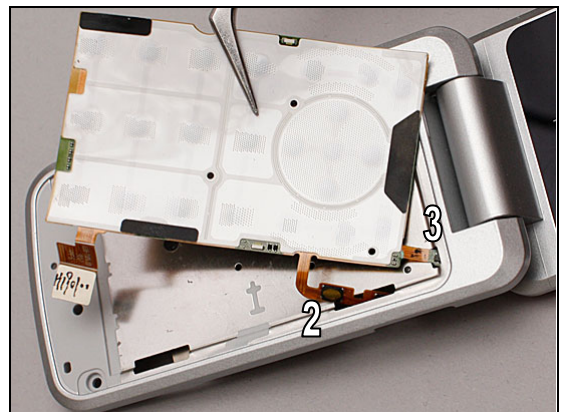


Slide the volume key dome (2) and the flex (3) out of the Lower Inner Cover and then remove the Keyboard FPC Assy.



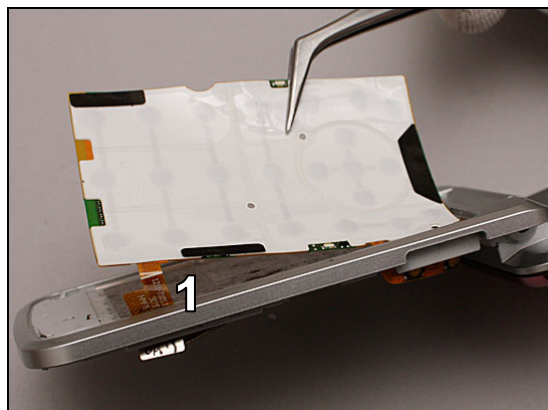
INSTALLATION

Insert the volume key dome (2) and flex (3) into the Lower Inner Cover.

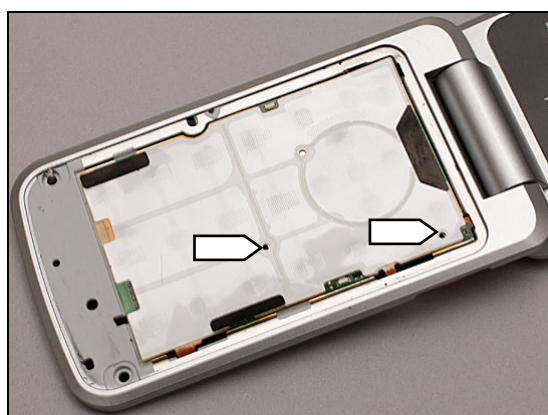


Replacement: Keyboard FPC Assy

Insert the keyboard connector (1) into the Lower Inner Cover.



Attach the Keyboard FPC Assy to the Lower Inner Cover by using these two guiding hole as alignment.



Press to secure the attachment.



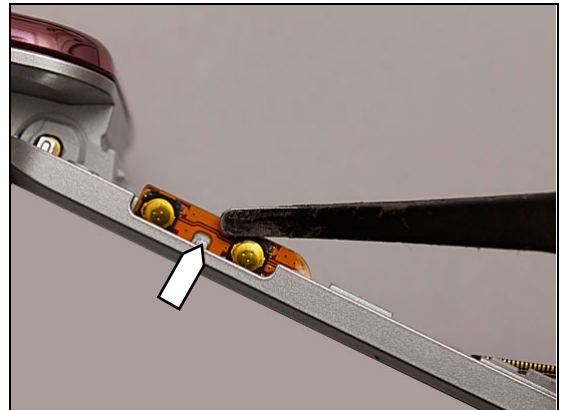
Put the volume key dome foil in its slot by using the Flex Film Assembly Tool.





Replacement: Keyboard FPC Assy

Use the pegs as alignment and press to attach the volume key dome to the Lower Inner Cover.



Replacement

4.26 Net Fabric Receiver

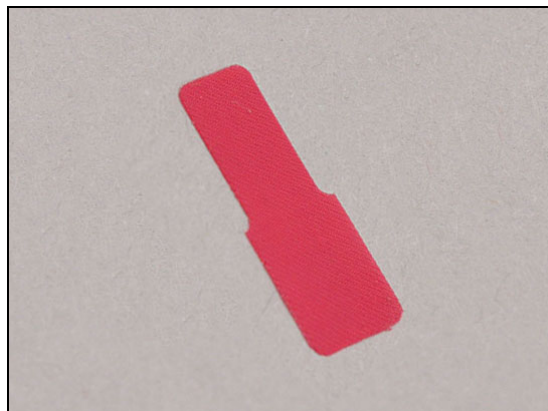
Follow the 3.1.1 & 3.2.1 Disassembly instructions!

Carry out the replacement as described below.

Follow the 5.1.6 & 5.2.6 Reassembly instructions!

REMOVAL

Peel off the Net Fabric Receive with tweezers.



INSTALLATION

Place the new Net Fabric Receiver in its proper position.



Press down to make it securely attached.



Replacement

4.27 Gasket QCIF Camera (for T707a)

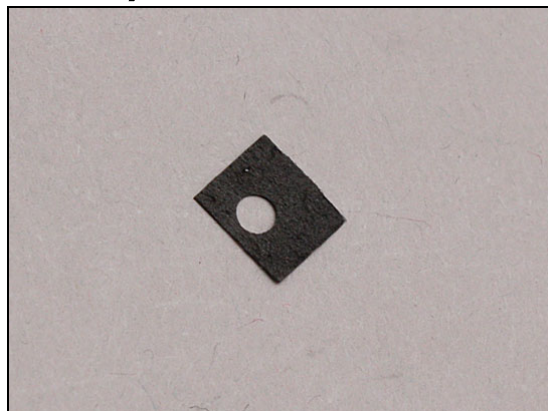
Follow the 3.1.1 & 3.2.1 Disassembly instructions!

Carry out the replacement as described below.

Follow the 5.1.6 & 5.2.6 Reassembly instructions!

REMOVAL

Peel off the Gasket QCIF Camera.



INSTALLATION

Place a new Gasket QCIF Camera in its proper position.



Press to make it securely attached.



Replacement

4.28 Sub Camera (for T707a)

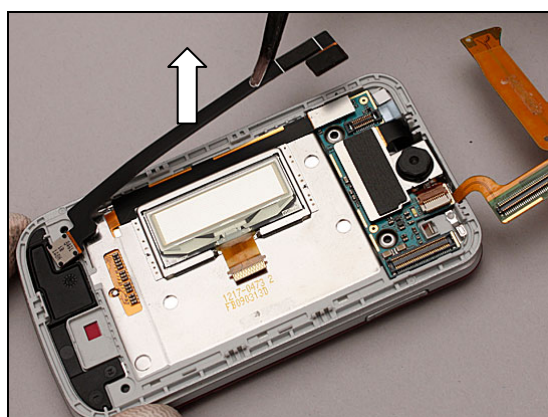
Follow the 3.1.1 & 3.2.1 – 3.2.3 Disassembly instructions!

Carry out the replacement as described below.

Follow the 5.1.4 – 5.1.6 & 5.2.6 Reassembly instructions!

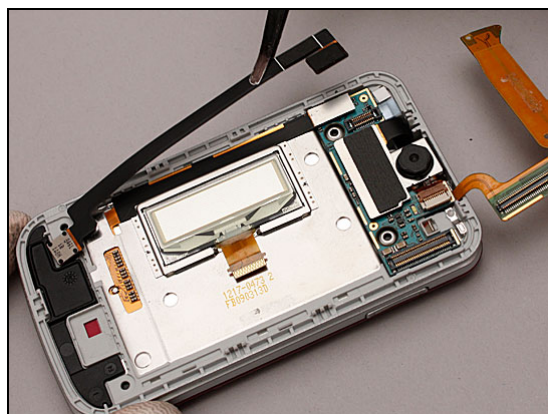
REMOVAL

Remove the Sub Camera by using the Flex Film Assembly Tool.

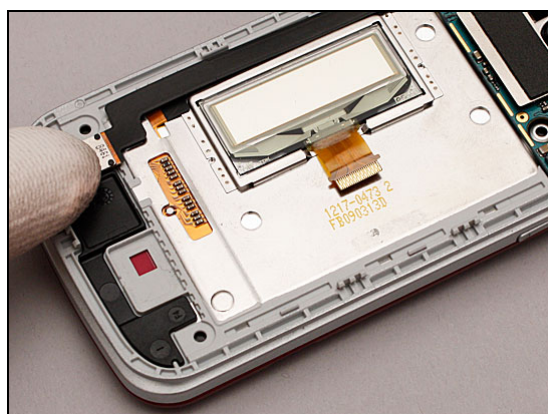


INSTALLATION

Place the new Camera module QCIF in position.



Press to secure its position.





Replacement

4.29 Sub LCD

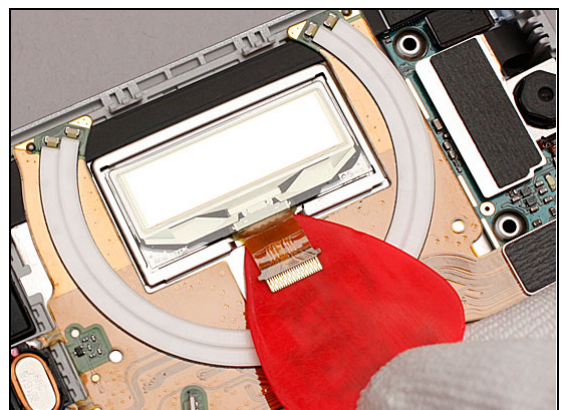
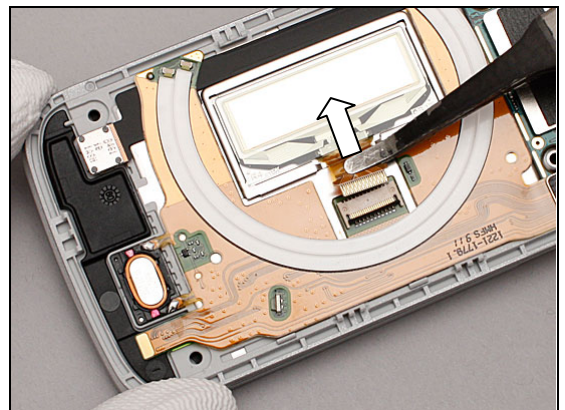
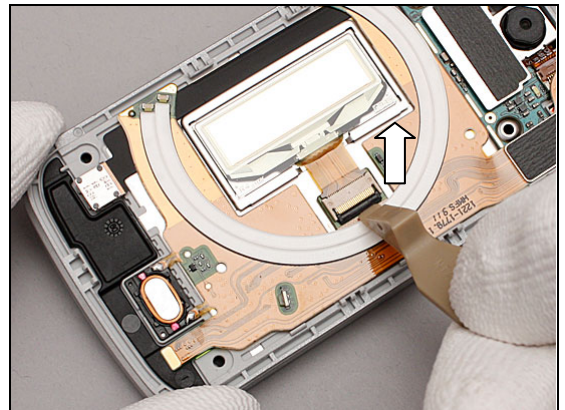
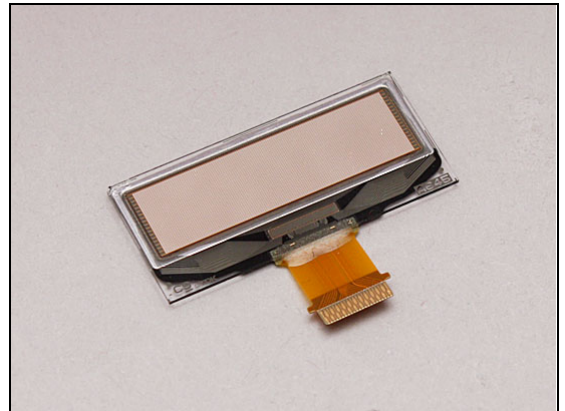
Follow the 3.1.1 & 3.2.1 – 3.2.2 Disassembly instructions!
Carry out the replacement as described below.
Follow the 5.1.5 – 5.1.6 & 5.2.6 Reassembly instructions!

REMOVAL

Unlock the locking bar of Sub LCD connector by using the Front Opening Tool.

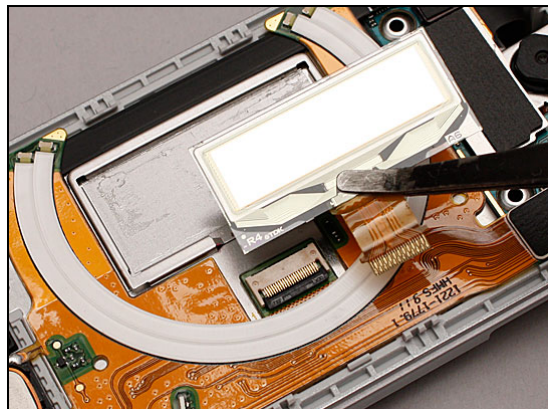
Disconnect the Sub LCD connector and Upper FPC Assy by using the Flex Film Assembly Tool.

Insert the Guitar Pick and slide back and forth to release the Sub LCD



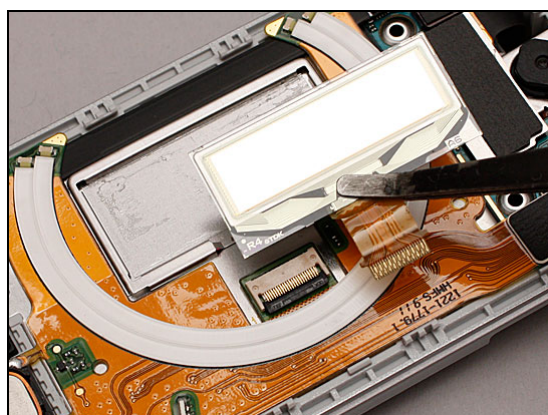
Replacement: Sub LCD

Remove it.

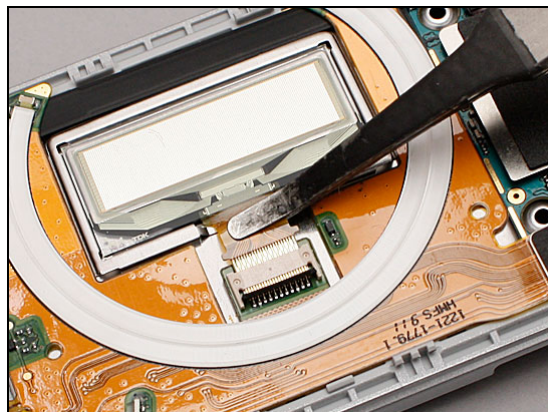


INSTALLATION

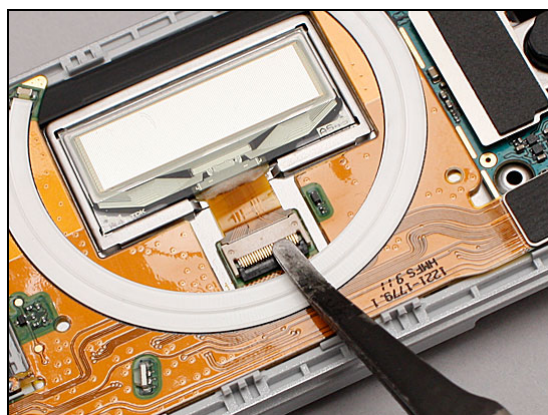
Place a new Sub LCD in position.



Connect the Sub LCD connector and Upper FPC Assy by using the Flex Film Assembly Tool.

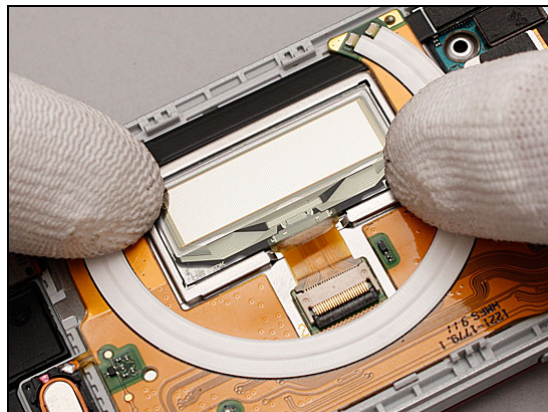


Lock the locking bar of Sub LCD connector by using the Flex Film Assembly Tool.



Replacement: Sub LCD

Press to make it securely attached.





Replacement

4.30 GPS PCBA Dummy Bracket (for T707&T707a)

Follow the 3.1.1 & 3.2.1 – 3.2.2 Disassembly instructions!
Carry out the replacement as described below.
Follow the 5.1.5 – 5.1.6 & 5.2.6 Reassembly instructions!

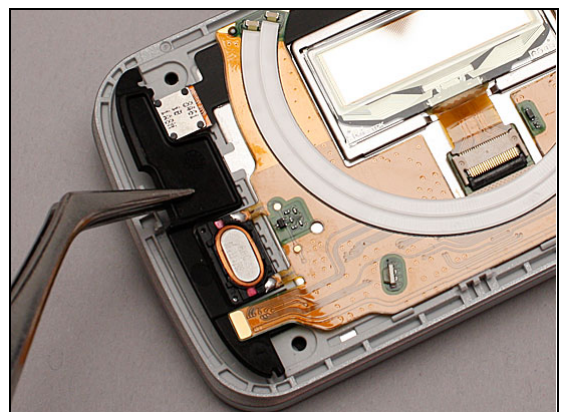
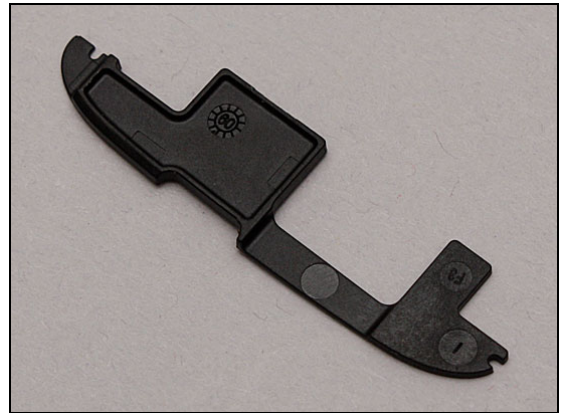
REMOVAL

Carefully insert the dentist hook to release the GPS PCBA Dummy Bracket

Remove the GPS PCBA Dummy Bracket.

INSTALLATION

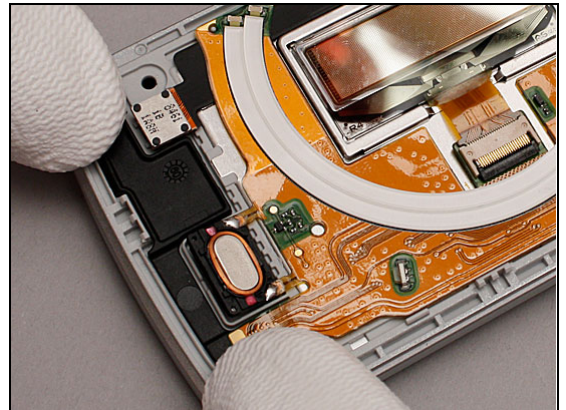
Place the new GPS PCBA Dummy Bracket in position





Replacement

Press to secure its position.



Replacement

4.31 Gasket Conductive Sheet (for TM717)

Follow the 3.1.1 & 3.2.1 – 3.2.3 Disassembly instructions!

Carry out the replacement as described below.

Follow the 5.1.4 – 5.1.6 & 5.2.6 Reassembly instructions!

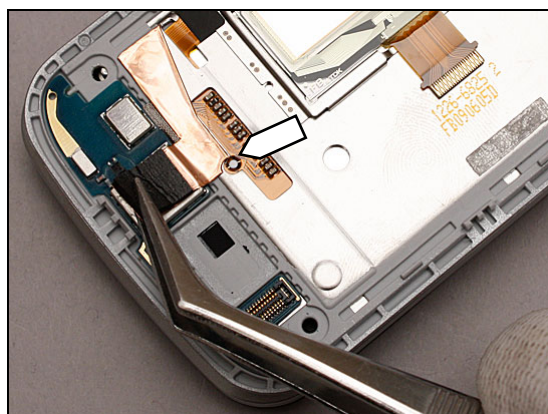
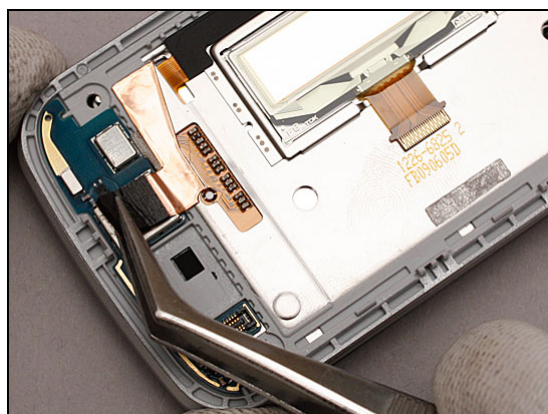
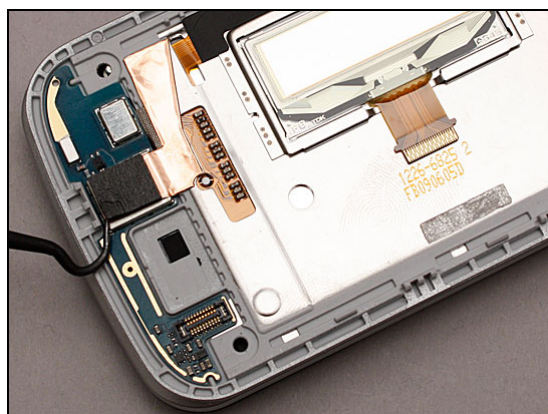
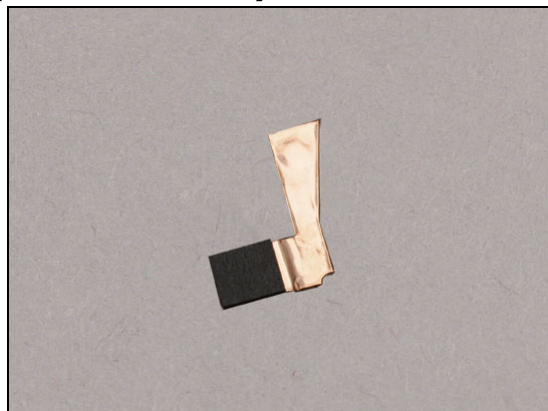
REMOVAL

Loosen the Gasket Conductive Sheet by using the dentist hook.

Peel off the Gasket Conductive Sheet.

INSTALLATION

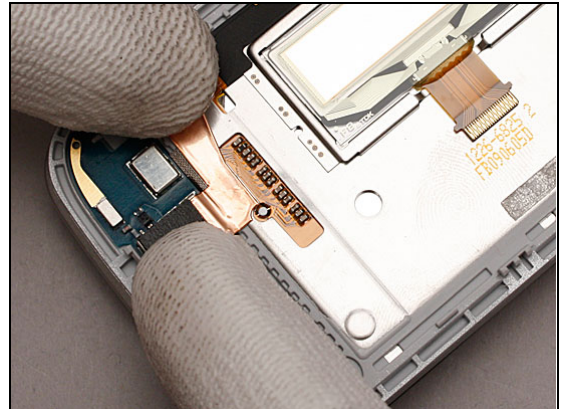
Attach the new Gasket Conductive Sheet in position by using the guiding hole as alignment.





Replacement: Gasket Conductive Sheet

Press to secure its attachment.



Replacement

4.32 GPS PCBA (for TM717)

Follow the 3.1.1 & 3.2.1 – 3.2.3 Disassembly instructions!

Follow the 4.31 Removal instructions!

Carry out the replacement as described below.

Follow the 4.31 Installation instructions!

Follow the 5.1.4 – 5.1.6 & 5.2.6 Reassembly instructions!

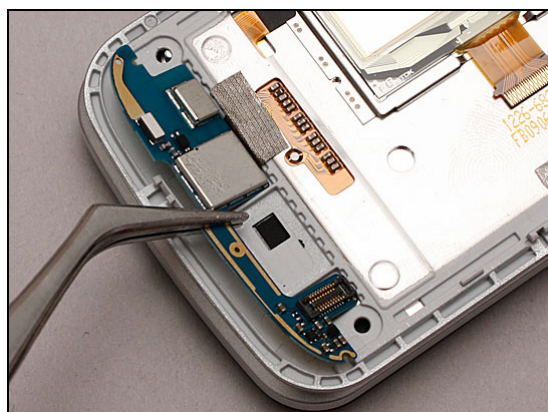
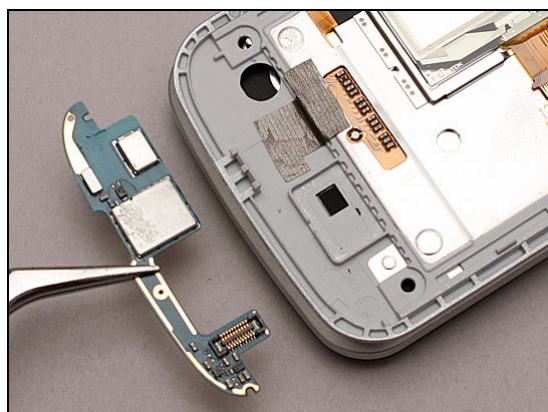
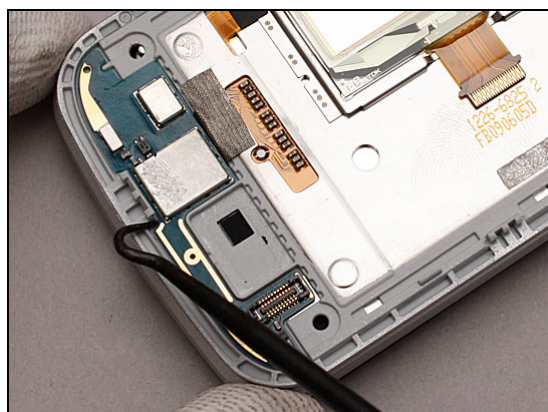
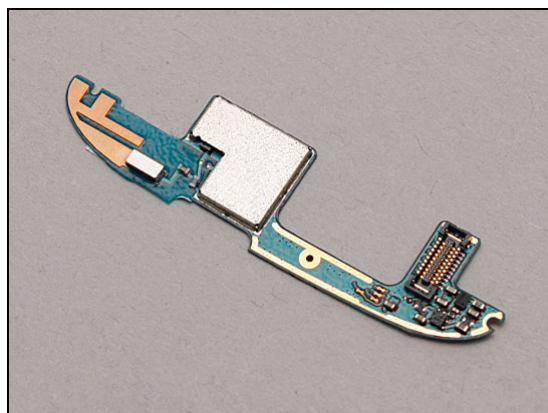
REMOVAL

Release the GPS PCBA by using the dentist hook.

Remove it.

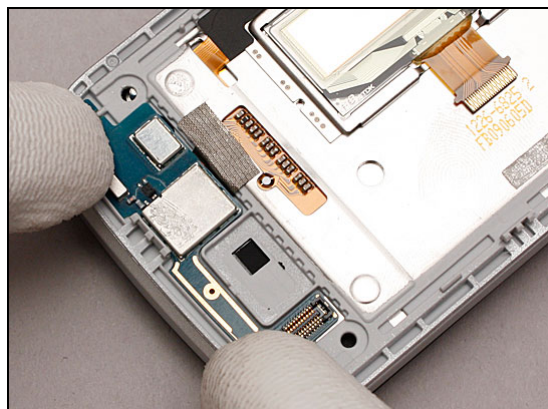
INSTALLATION

Install the new GPS PCBA in place.



Replacement: GPS PCBA

Press to secure its attachment.



Replacement

4.33 ESD Fabric for GPS (for TM717)

Follow the 3.1.1 & 3.2.1 – 3.2.3 Disassembly instructions!

Follow the 4.31 & 4.32 Removal instructions!

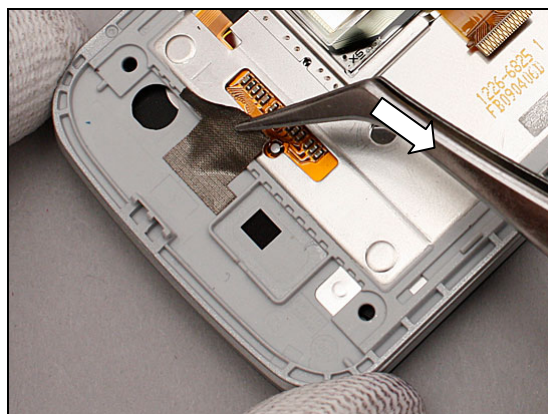
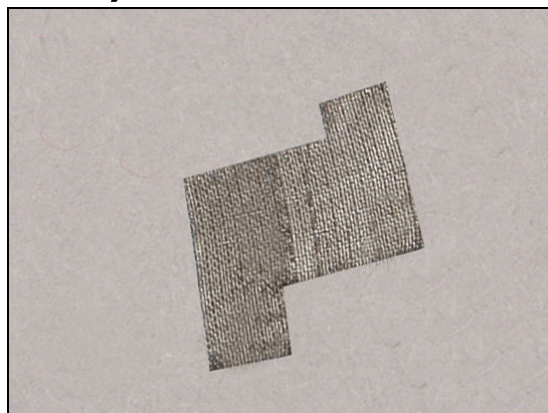
Carry out the replacement as described below.

Follow the 4.32 & 4.31 Installation instructions!

Follow the 5.1.4 – 5.1.6 & 5.2.6 Reassembly instructions!

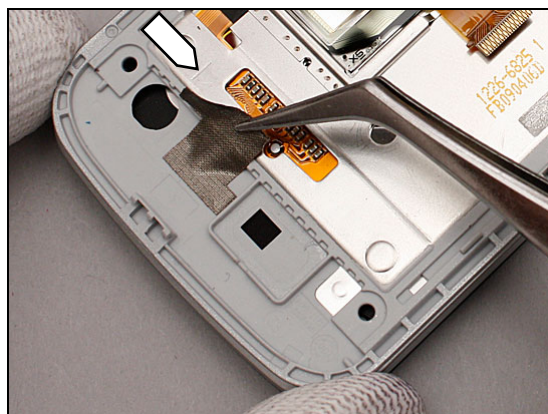
REMOVAL

Peel off the ESD Fabric for GPS with the tweezers.



INSTALLATION

Attach the new ESD Fabric for GPS in position by using the pointer as alignment.



Press to secure its attachment with the tweezers.



Replacement

4.34 Light Guide

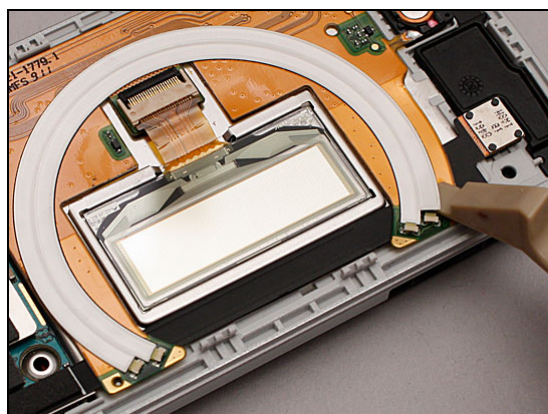
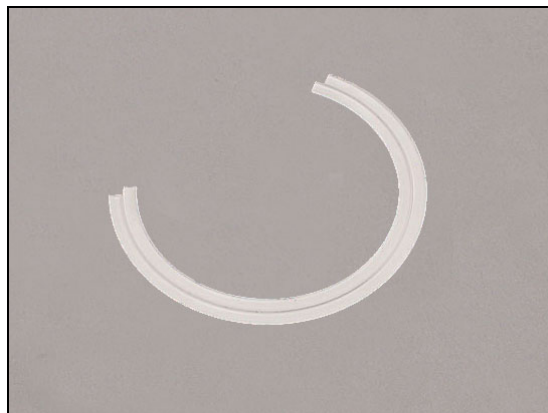
Follow the 3.1.1 & 3.2.1 – 3.2.2 Disassembly instructions!

Carry out the replacement as described below.

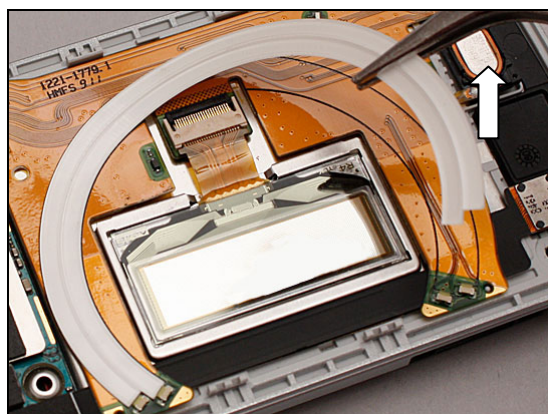
Follow the 5.1.5 – 5.1.6 & 5.2.6 Reassembly instructions!

REMOVAL

Loosen the Light Guide by using the Front Opening Tool

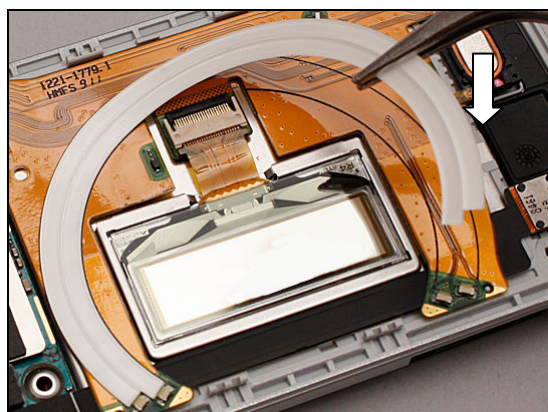


Carefully Peel off the Light Guide from the Upper FPC Assy with the tweezers.



INSTALLATION

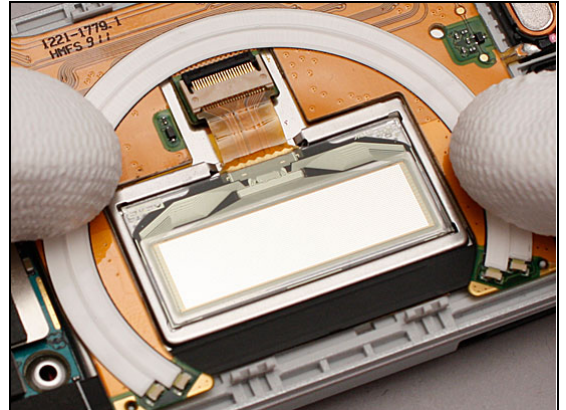
Place the new Light Guide in its position.





Replacement: Light Guide

Press to secure the attachment.





Replacement

4.35 Camera Module 3.2 Mpixel

Follow the 3.1.1 & 3.2.1 – 3.2.3 Disassembly instructions!

Carry out the replacement as described below.

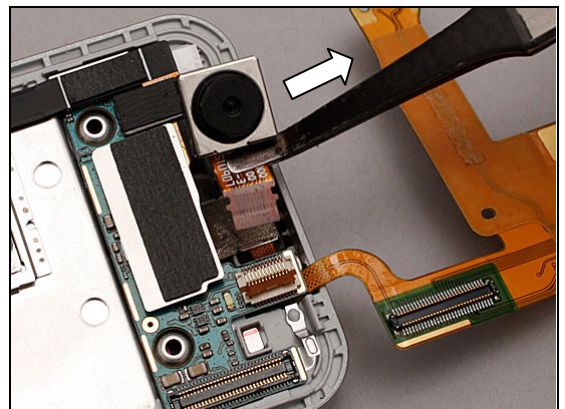
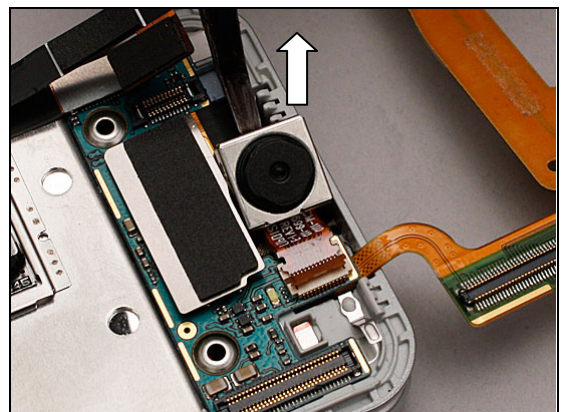
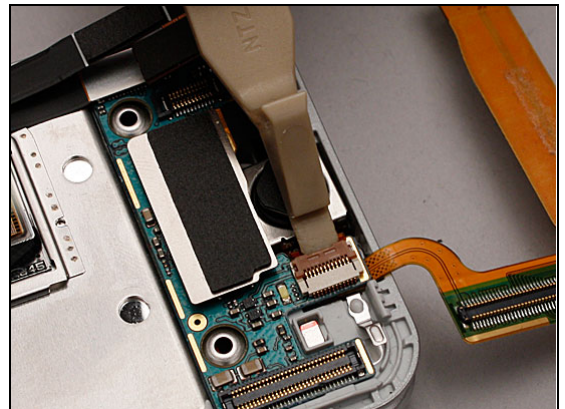
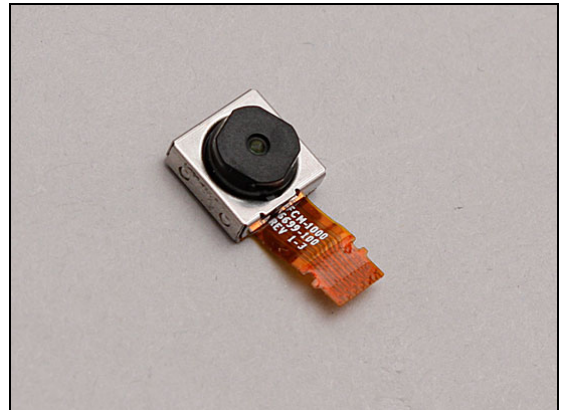
Follow the 5.1.4 – 5.1.6 & 5.2.6 Reassembly instructions!

REMOVAL

Unlock the Camera connector by using the Front Opening Tool.

Lift the Camera out of its cavity.

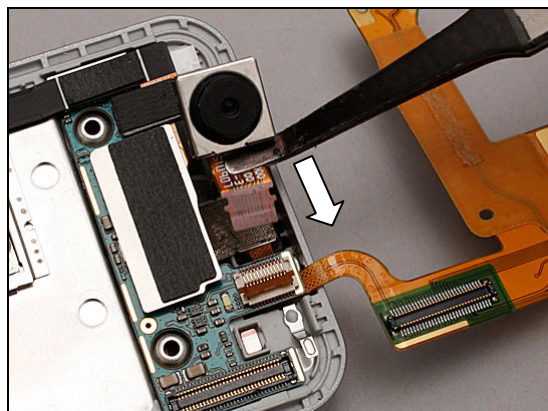
Remove it.



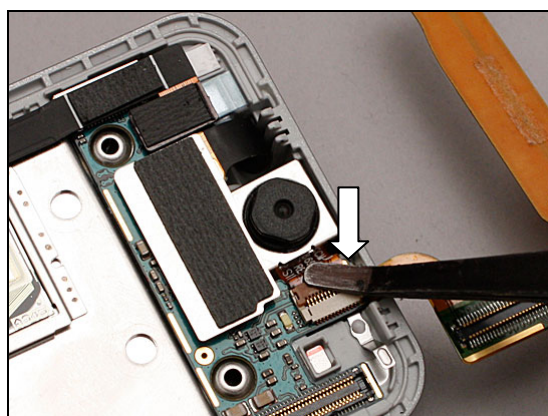
Replacement

INSTALLATION

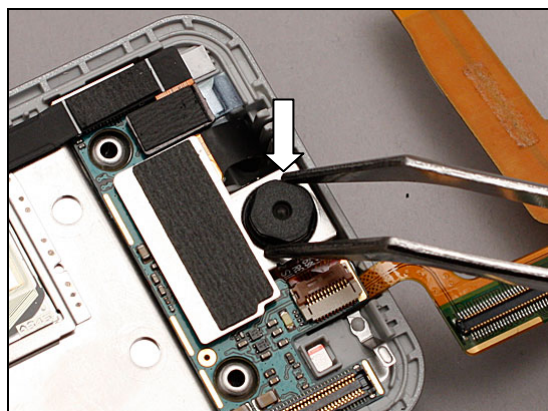
Connect the new Camera to the Sub PCBA.



Lock the locking bar of the Camera connector by using the Flex Film Assembly Tool.



Press the Camera into its cavity.



Replacement

4.36 Main LCD

Follow the 3.1.1 & 3.2.1 – 3.2.3 Disassembly instructions!

Follow the 4.28 Removal instructions!

Carry out the replacement as described below.

Follow the 4.28 Installation instructions!

Follow the 5.1.4 – 5.1.6 & 5.2.6 Reassembly instructions!

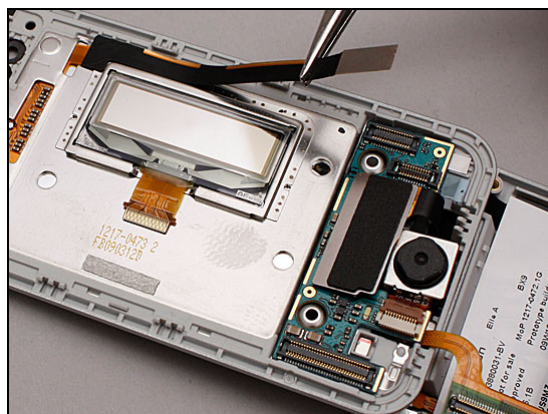
REMOVAL

Peel off the Main LCD FPC.

Turn over the phone.

Insert the Guitar Pick and slide it forth and back to loosen the Main LCD.

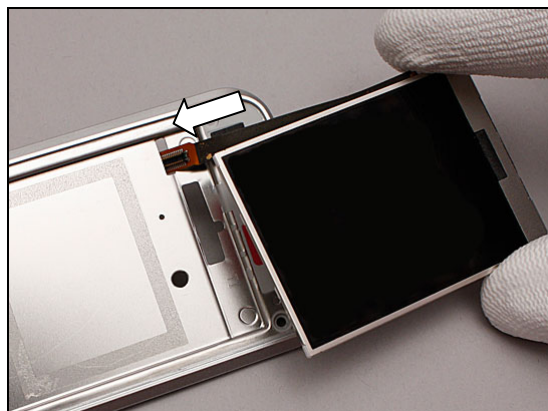
Slide the flex film through the slot and remove the Main LCD.



Replacement: Main LCD

INSTALLATION

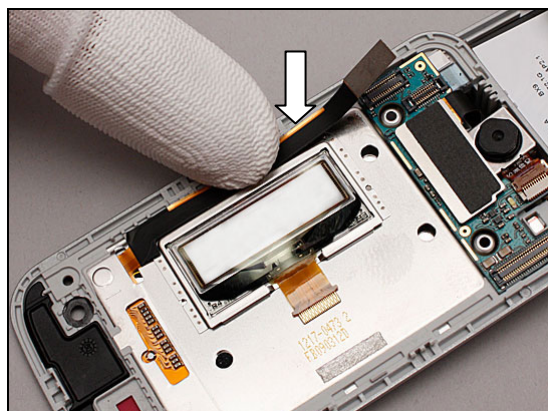
Insert the Main LCD FPC through the slot.



Place the Main LCD into its cavity.



Turn over the phone.
Press to attach the Main LCD FPC.



Replacement

4.37 Waterproof Tape

Follow the 3.1.1 & 3.2.1 – 3.2.3 Disassembly instructions!

Follow the 4.28 Removal instructions!

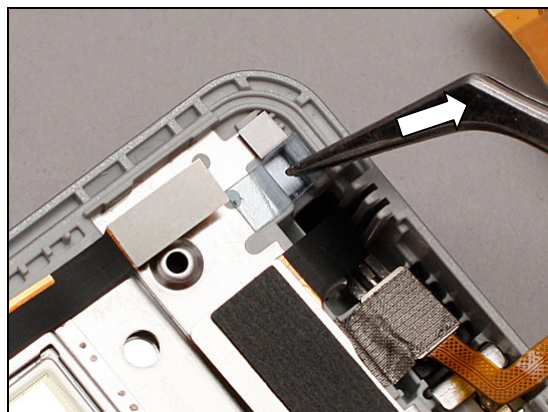
Carry out the replacement as described below.

Follow the 4.28 Installation instructions!

Follow the 5.1.4 – 5.1.6 & 5.2.6 Reassembly instructions!

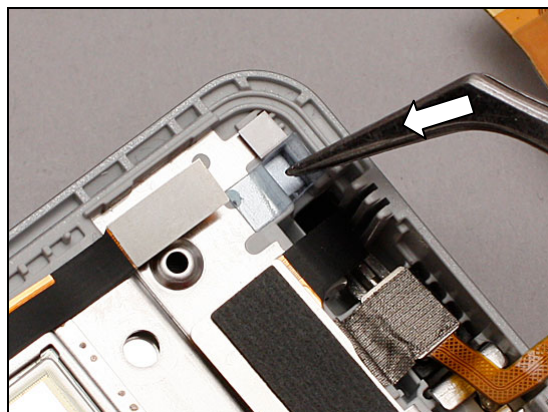
REMOVAL

Peel off the Waterproof Tape with the tweezers.

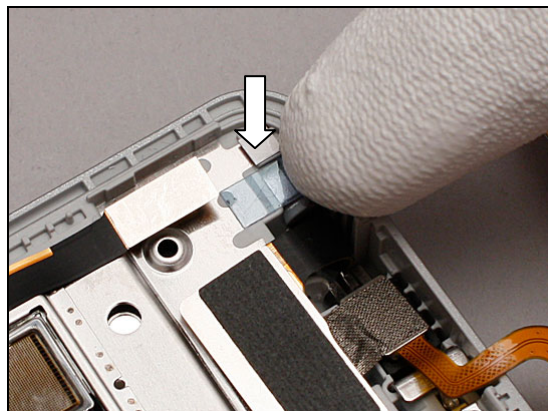


INSTALLATION

Attach a new Waterproof Tape in position by using the corner as alignment.



Press to secure the attachment.



Replacement

4.38 Hinge

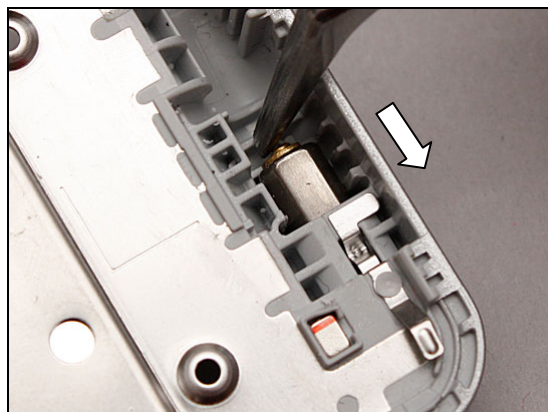
Follow the 3.1.1 – 3.2.6 Disassembly instructions!

Carry out the replacement as described below.

Follow the 5.1.1 – 5.2.6 Reassembly instructions!

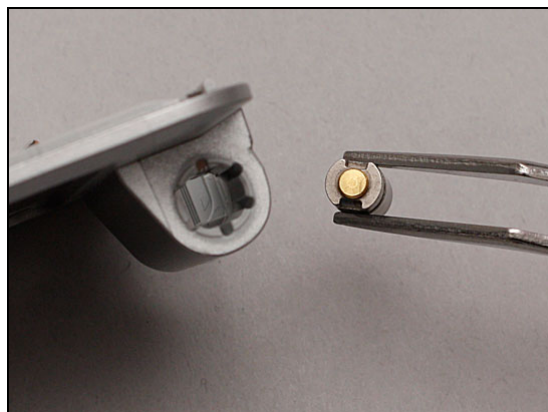
REMOVAL

Press the Hinge outwards to remove Hinge by using the tweezers.

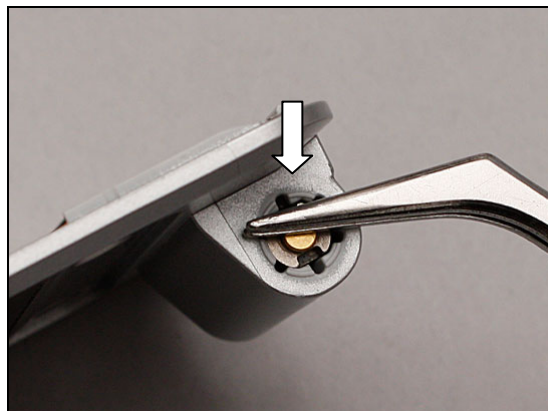


INSTALLATION

Install a new Hinge in the orientation as shown in the picture.



Press the Hinge inwards till it aligns with the edge of the hole.





Replacement

4.39 Gasket LCD Connector for no sub camera (for T707&TM717)

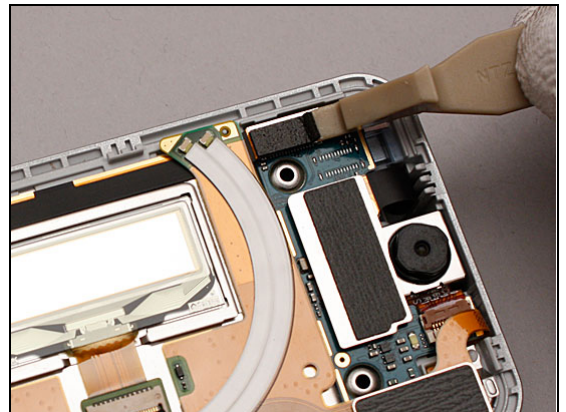
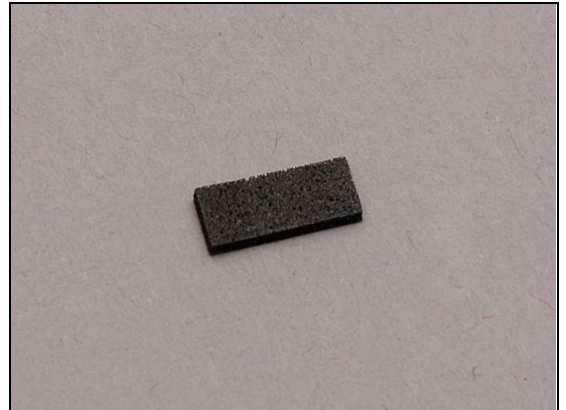
Follow the 3.1.1 & 3.2.1 – 3.22 Disassembly instructions!

Carry out the replacement as described below.

Follow the 5.1.5 – 5.1.6 & 5.2.6 Reassembly instructions!

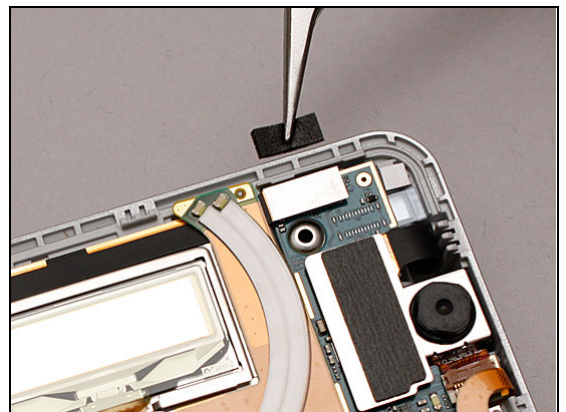
REMOVAL

Peel off the Gasket LCD Connector for no sub camera by using the Front Opening Tool.



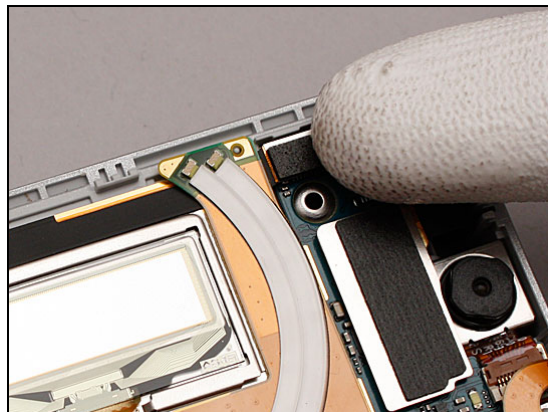
INSTALLATION

Attach the new Gasket LCD Connector for no sub camera in place.



Replacement: Gasket LCD Connector for no sub camera

Press to secure its attachment.





5 Reassembly

5.1 Upper Unit

The disassembly is done in the following order:

1. Upper Inner Cover (a) & Hinge FPC (b)
2. Lower Inner Cover
3. Hinge Clip
4. Upper FPC Assy (a) & Sub PCBA (b)
5. Upper Outer Cover
6. Main Window Assy



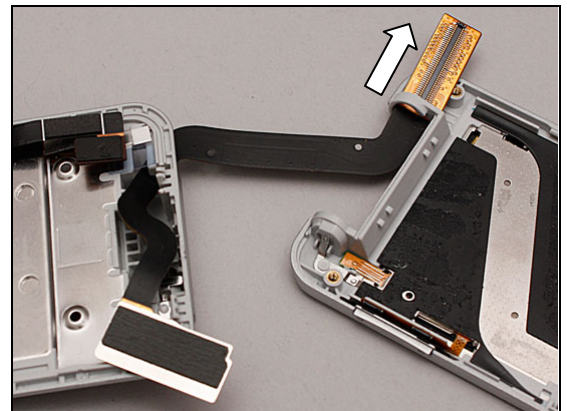
5.1.1 Upper Inner Cover & Hinge FPC

Insert the Hinge FPC through the hole of the Upper Inner Cover.

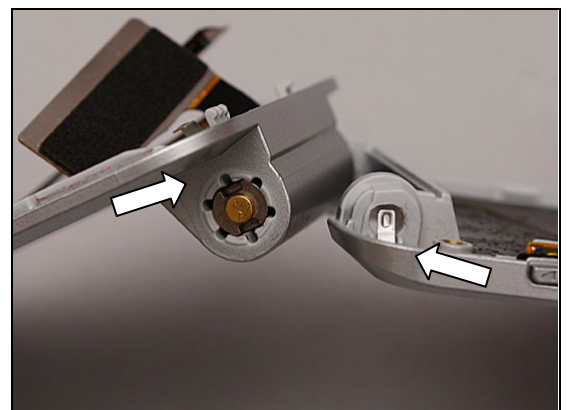


5.1.2 Lower Inner Cover

Insert the Hinge FPC through the small slot of the Lower Inner Cover.



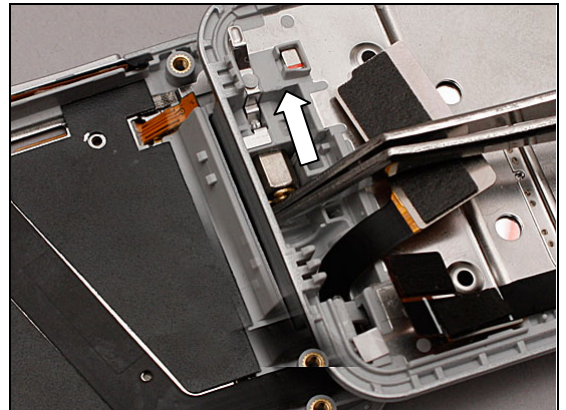
Push two parts in the direction of the arrow to make them properly joined.





Reassembly: Upper Unit

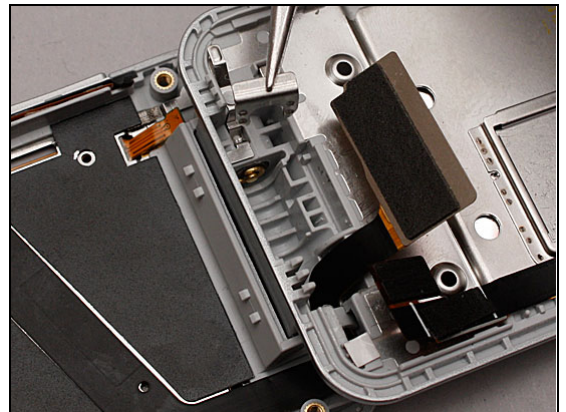
Press the Hinge inwards till the end of its cavity with the tweezers.



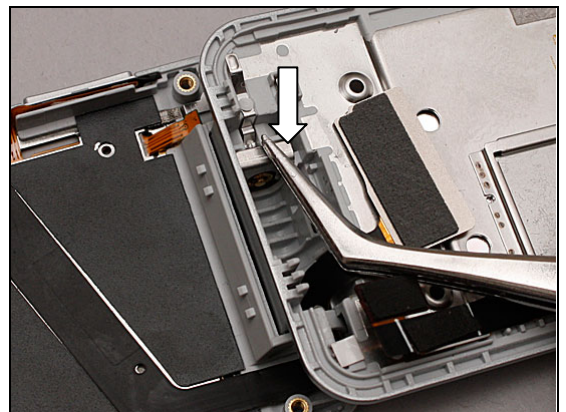
5.1.3 Hinge Clip

Place the Hinge Clip in position.

NOTE: Make sure the orientation of the Hinge Clip

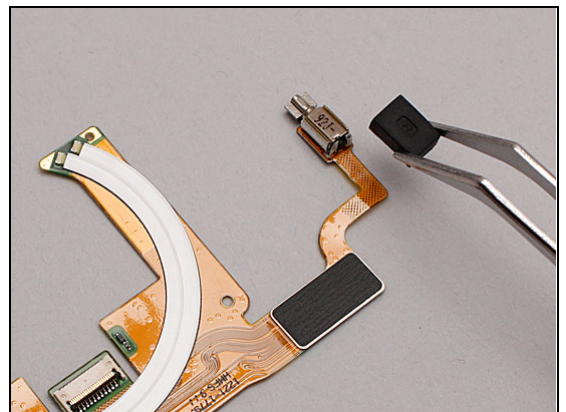


Press the Hinge Clip down to the end of its cavity.



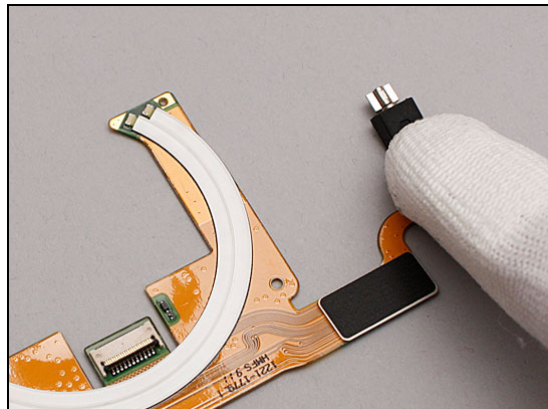
5.1.4 Upper FPC Assy & Sub PCBA

Install the Vibrator Grommet onto the vibrator as shown in the picture.

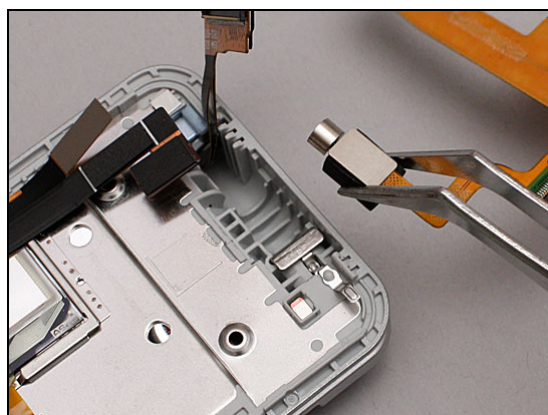


Reassembly: Upper Unit

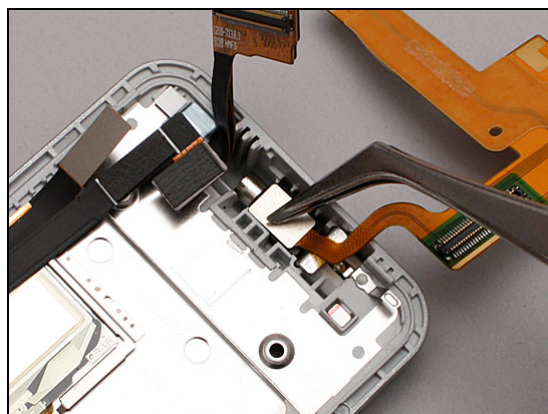
Press to secure it position.



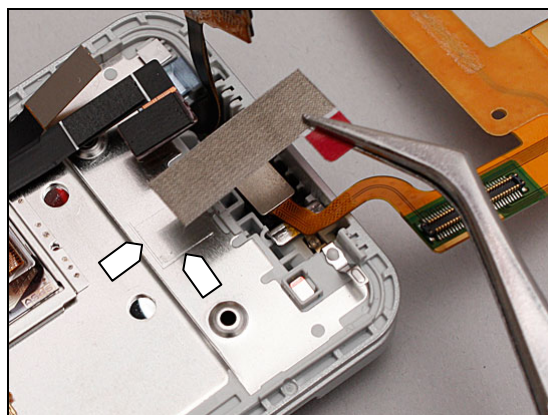
Place the vibrator with the Vibrator Grommet in position.



Press them down to the end of their cavity with tweezers.

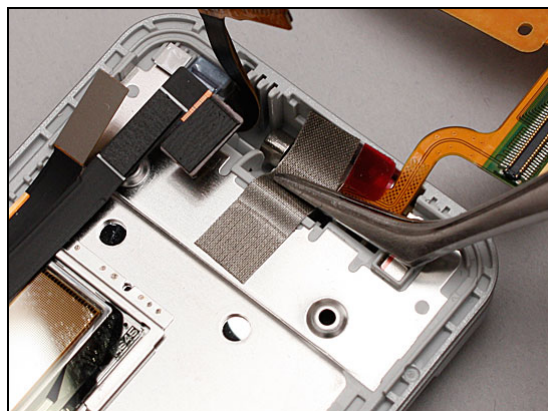


Attach a new ESD fabric for camera on Upper Inner Cover aligning by the guide pointers as shown in the picture.

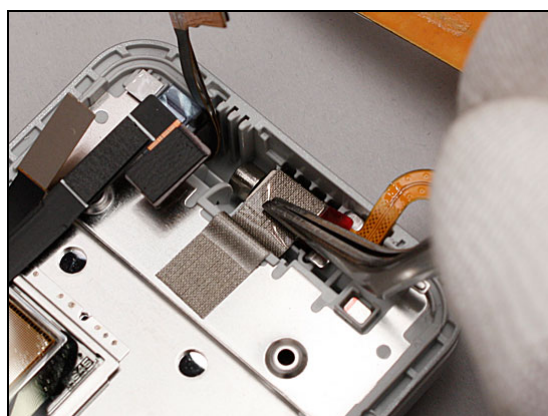


Reassembly: Upper Unit

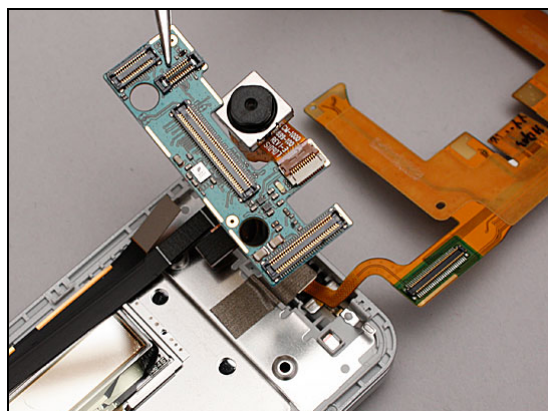
Keep pressing the fabric along the frame to attach it.



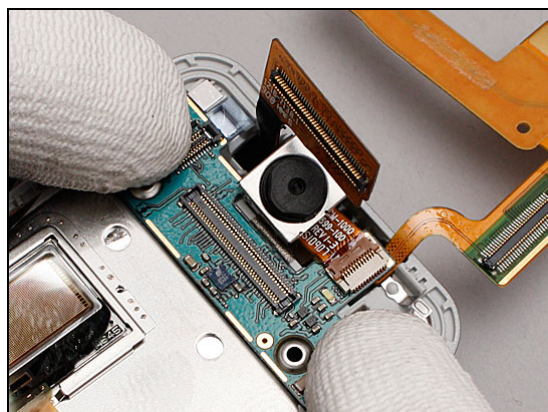
Keep pressing the fabric on the vibrator to attach it,
And then remove the its protecting foil.



Place the Sub PCBA with Camera in position.

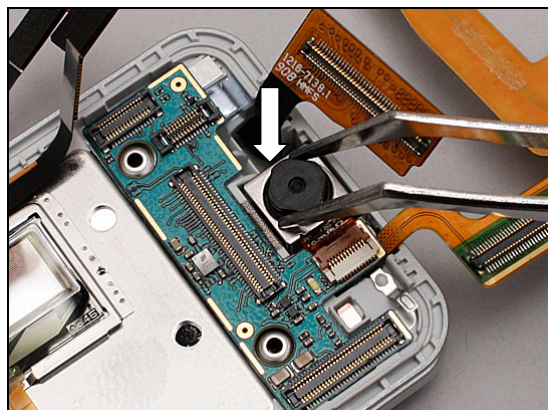


Press to secure the attachment.

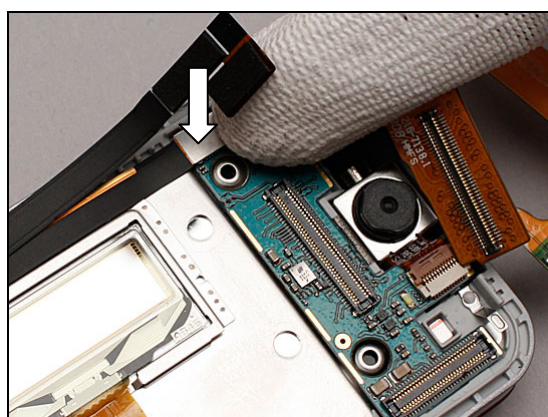


Reassembly: Upper Unit

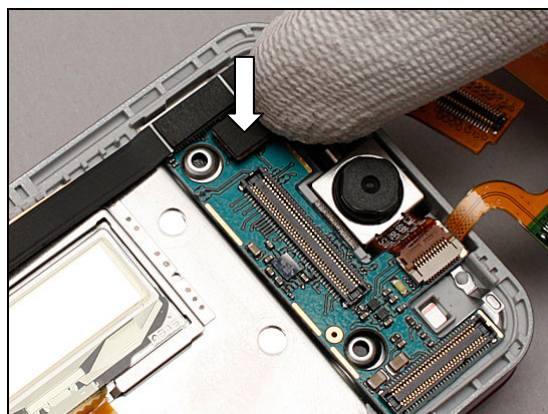
Press the Camera down to the end of its cavity.



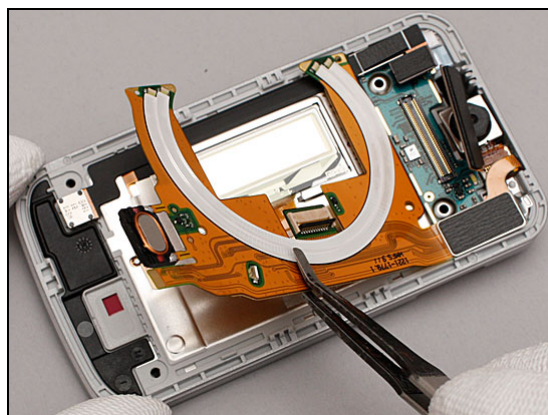
Connect the Main LCD connector.



Only for T707a (with Sub Camera)
Connect the Sub Camera connector.

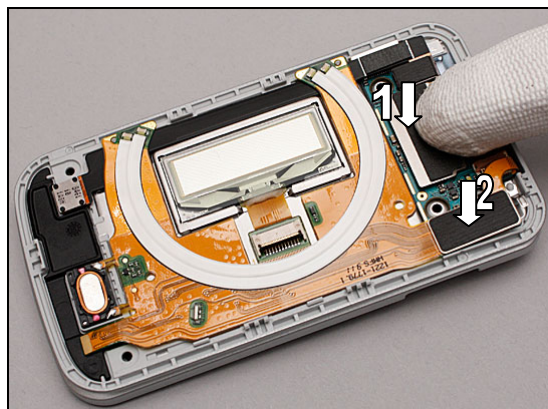


Turn over the Upper FPC Assy as shown in the picture.

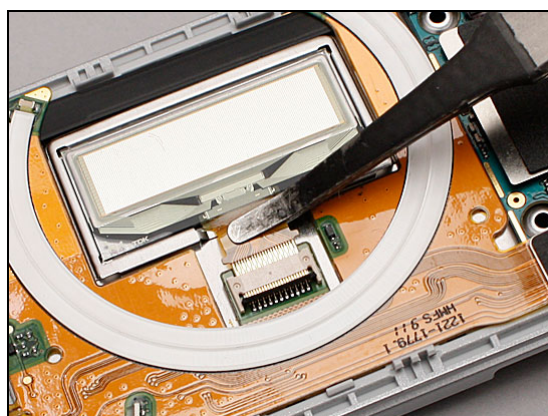


Reassembly: Upper Unit

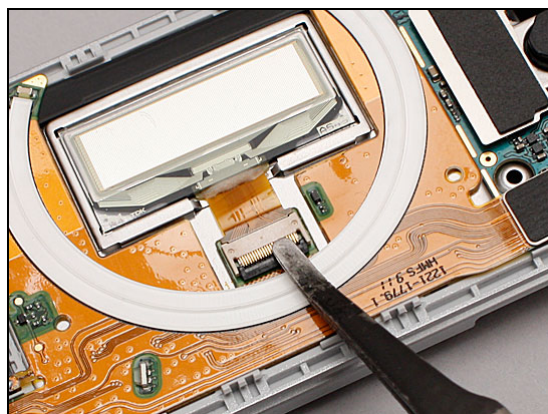
Connect the Hinge FPC connector (1), and the Upper FPC Assy connector (2).



Connect the Sub LCD to the Upper FPC Assy.



Lock the locking bar by using the Flex Film Assembly Tool.

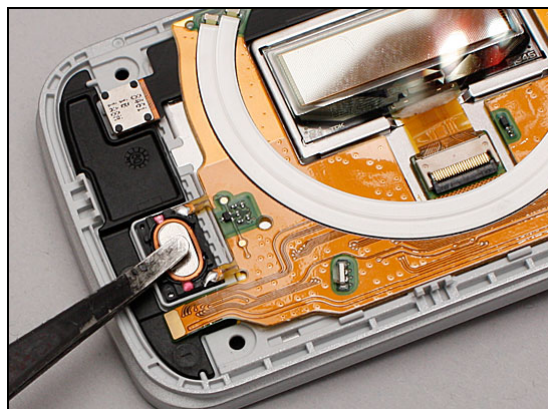


Only for TM717 (with GPS)
Connect the GPS PCBA connector.

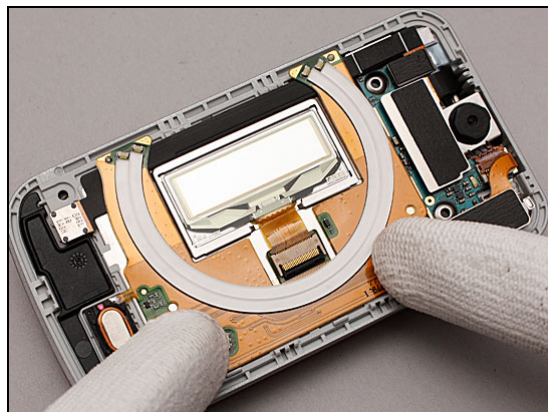


Reassembly: Upper Unit

Press the receiver into its cavity.



Press on the Upper FPC Assy to secure its attachment.



5.1.5 Upper Outer Cover

Place the Upper Outer Cover onto Upper Inner Cover.



Press around to snap all the hooks until the two Cover are joined without any gaps.



Reassembly: Upper Unit

Open the phone.

Tighten these four screws using JCIS No.0 bit. to a torque of 8 ± 2 Ncm.



5.1.6 Main Window Assy

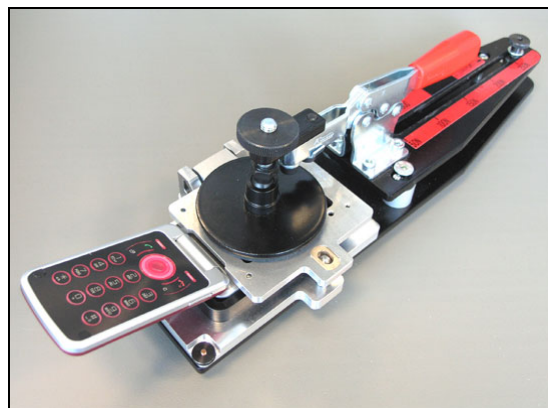
Place the new Main Window Assy in position.



Press on all side of Main Window Assy to secure the attachment.



Using the Press Tool to press the Main Window Assy with a pressure of 250 N for 20 seconds.

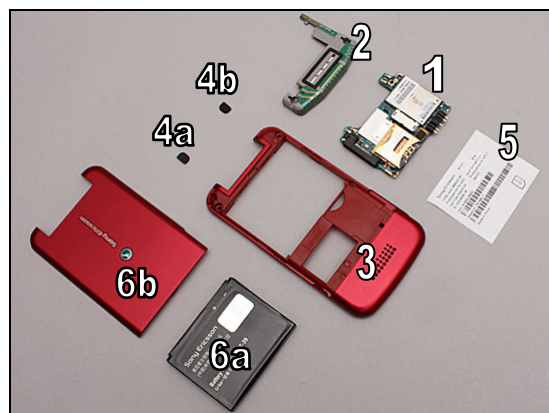


Reassembly

5.2 Lower Unit

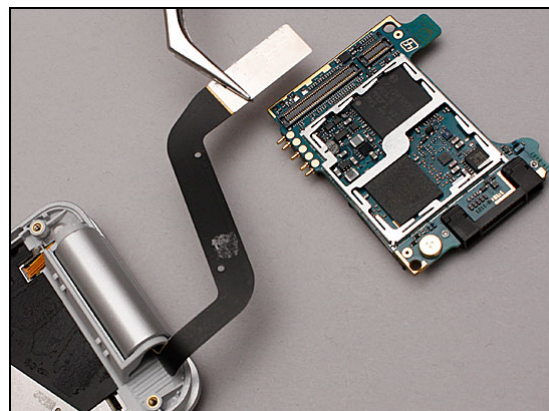
The disassembly is done in the following order:

1. Main PCBA
2. Main&BT Antenna Box with Speaker
3. Lower Outer Cover
4. Screw Cover Left (a) & Screw Cover Right (b)
5. Core Unit Label
6. Battery (a) & Battery Cover (b)



5.2.1 Main PCBA

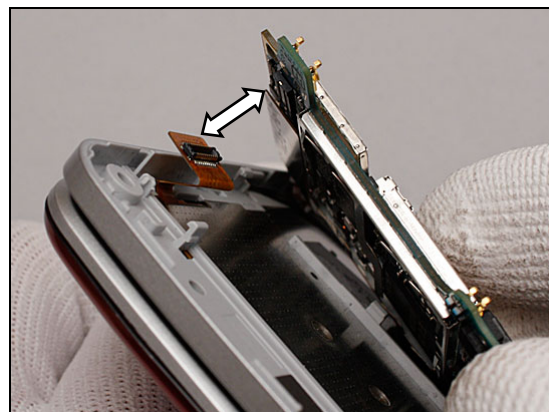
Connect the Hinge FPC connector to the Main PCBA.



Attach the Hinge FPC in accordance with the guiding holes on the Lower Inner Cover.



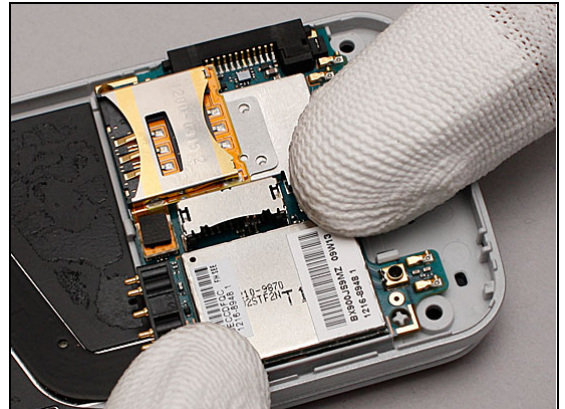
Connect the Keyboard FPC Assy connector to the Main PCBA.



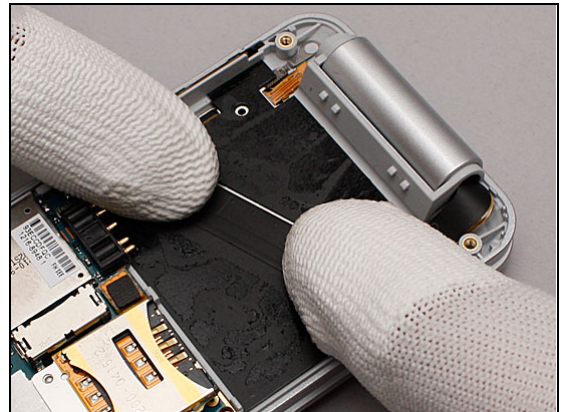


Reassembly: Lower Unit

Press to snap the Main PCBA.

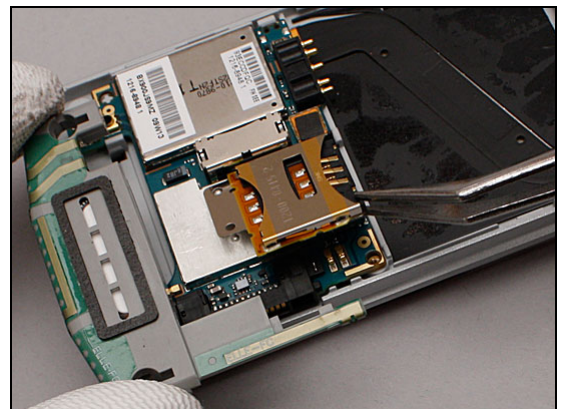


Press to secure the Hinge FPC attachment.

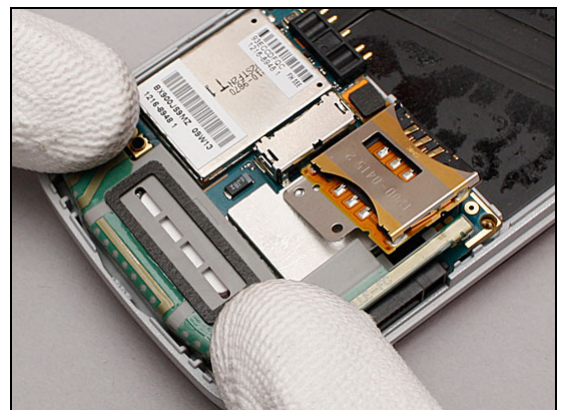


5.2.2 Main&BT Antenna Box with Speaker

Lift the SIM FPC PCBA to a certain angle and install the Main&BT Antenna Box with Speaker in place.



Press to secure the attachment.





Reassembly: Lower Unit

Press on the SIM FPC PCBA to secure its attachment.

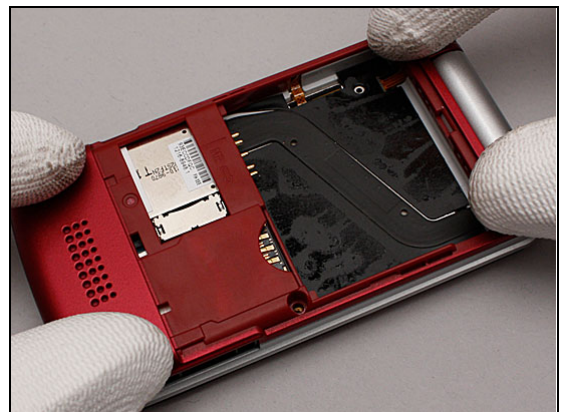


5.2.3 Lower Outer Cover

Place the Lower Outer Cover onto the Lower Inner Cover.



Press to snap it until the two covers are jointed without any gaps.



Tighten these three screws using torx bit No.5 to a torque of 10 ± 2 Ncm





Reassembly: Lower Unit

Open the phone

Tighten the two screws using torx bit No.6 to a torque of 18 ± 2 Ncm.



5.2.4 Screw Cover

Attach the Screw Cover Left in place.



Press to secure its attachment.



Do the same with the Screw Cover Right.



Reassembly: Lower Unit

5.2.5 Core Unit Label

Check that the proper label format is loaded in the Zebra printer and write a new label by using 'LabelMake' software.

Attach the Core Unit Label in place.

One label only is allowed!



Press on all side of the Core Unit Label to secure the attachment.



5.2.6 Battery & Battery Cover

Clean the system connector by using the brush before installing the battery!

Place the Battery into its cavity.



Press it into place.



Reassembly: Lower Unit

Insert the hooks of the Battery Cover into the pockets of the Lower Outer Cover.



Press around to secure the Battery Cover.





6 Revision History

Rev.	Date	Changes / Comments
1	2009-May-06	1 st release
2	2009-09-04	Updated about TM717 part of Gasket Conductive Sheet
3	2009-10-15	Updated photo on page 7 on 3.1.3, adjusting Guitar pick position.
4	2009-10-22	Add press tool photo on Page70